

Installation Guide

Version 0.92

Trademarks

Content is subject to revision without prior notice.

All trademarks remain the property of their respective owners.

Copyright Statement

This publication may not be reproduced as a whole or in part, in any way whatsoever unless prior consent has been obtained from owner.

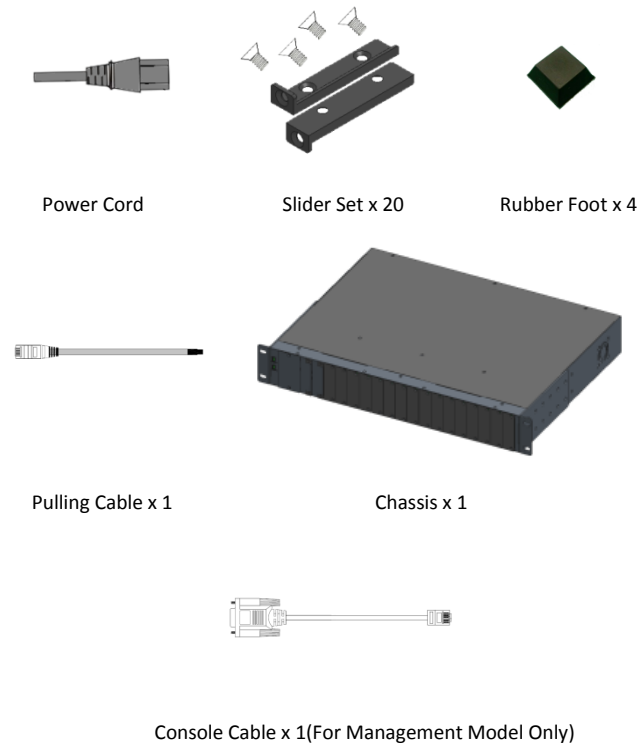
FCC Warning

The Chassis have been tested and found to comply with the limits for a Class A digital device, pursuant to Part 15 of the FCC Rules. These standards are designed to provide reasonable protection against harmful interference when these devices are operated in a commercial environment. These devices generate, use, and can radiate radio frequency energy and may cause harmful interference to radio communications unless installed in accordance with this User's Guide. Operation of these devices in a residential area is likely to cause harmful interference which will make the user responsible for the appropriate remedial action at his / her own expense.

CE Mark Warning

These are Class A products. In a domestic environment these products may cause radio interference in which case the user will need to consider adequate preventative methods.

1. Package Contents



2. Overview

The compact media converter chassis provides 18 slots for mixed installation of standalone non-managed and managed MCT series media converters. Fixed power module enhances power redundancy that gives seamless power changeover if one of power supply has failure. The installation & operation procedures of chassis are simple & straightforward. It also allows you to collect compatible converters together for the aim of neatly space-saving solution.

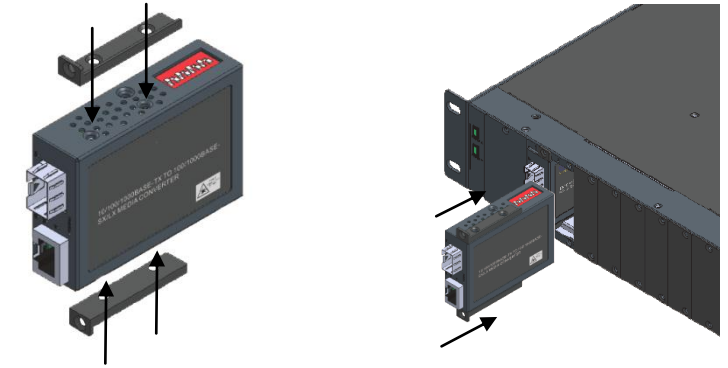
3. Installation

Note: Please wear a grounding device and observe electrostatic discharge precautions before install into the 18 SLOTS MEDIA CONVERTER CENTER CHASSIS.

3.1 Install GIGABIT/FAST ETHERNET MEDIA CONVERTER Slide-In Modules

1. Plan the GIGABIT/FAST ETHERNET MEDIA CONVERTER Slide-In Module slot positions
2. Remove the cover plate from selected installation slot
3. Insert GIGABIT/FAST ETHERNET MEDIA CONVERTER Slide-In Module carefully and firmly

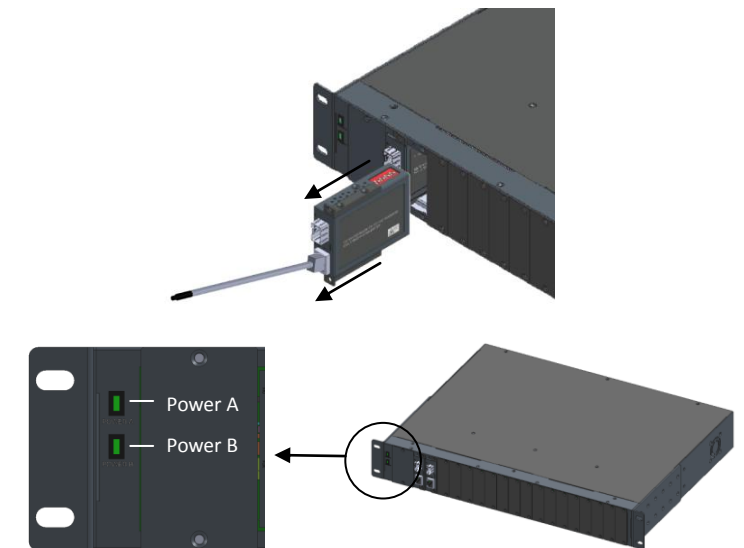
into the selected slot



4. Fix the fastener screw.

5. Repeat steps 2 to 4 for all the GIGABIT/FAST ETHERNET MEDIA CONVERTER Slide-In Module.

6. You may connect the supplied pulling cable with a media converter to pull it out more easily.



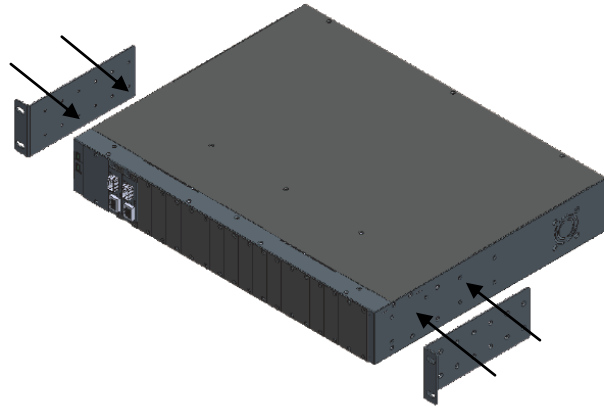
For Management model, please refer to User's Manual that comes with the Chassis for panel overview.

3.2 Install 18 SLOTS MEDIA CONVERTER CENTER CHASSIS

Note: Do not block the bottom of the 18 SLOTS MEDIA CONVERTER CENTER CHASSIS.

3.2.1 Standard Rack Installation

1. Plan the 18 SLOTS MEDIA CONVERTER CENTER CHASSIS rack position
2. Fix both mounting brackets into the 18 SLOTS MEDIA CONVERTER CENTER CHASSIS



3. Align the 18 SLOTS MEDIA CONVERTER CENTER CHASSIS with mounting bracket into the selected mounting rail position
4. Fix the 18 SLOTS MEDIA CONVERTER CENTER CHASSIS with mounting brackets into the selected mounting rails position carefully and firmly.

3.2.2 Desk Top Installation

1. Plan the 18 SLOTS MEDIA CONVERTER CENTER CHASSIS desk top position
2. Place the 18 SLOTS MEDIA CONVERTER CENTER CHASSIS on a well ventilated, flat and firmly desk.

3.3 Connect GIGABIT/FAST ETHERNET MEDIA CONVERTER slide-in modules to network

Please refer to the User's Guide that comes with the GIGABIT/FAST ETHERNET MEDIA CONVERTER slide-in modules for cabling specifications and direction.

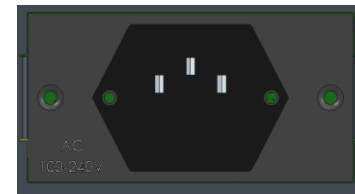
3.4 Connect Power Supply

Two kinds of optional power connector (DC power or AC power) are available for this Chassis.

Note: Do NOT turn on power source switch before connecting with 18 SLOTS MEDIA CONVERTER CENTER CHASSIS.



DC POWER Terminal



AC POWER Socket

NOTE: Power supply is active and concurrent with internal power supply

For Management model, please refer to User's Guide that comes with the Chassis for power module installation.

3.4.1 Power On the 18 SLOTS MEDIA CONVERTER CENTER CHASSIS

Procedure

1. Check the power outlet
2. For AC Power : Connect the power cord with the power outlet

For DC Power : Insert wire positive to switch positive and wire negative to switch negative
3. Turn on the 18 SLOTS MEDIA CONVERTER CENTER CHASSIS power source
4. Verify the 18 SLOTS MEDIA CONVERTER CENTER CHASSIS status
5. Power LED is on

4. OPERATION

LED Status

18 SLOTS MEDIA CONVERTER CENTER CHASSIS LED (For Non-Management Model)

Power	Turn on green when primary power is on
	Turn off when primary power is down or fail

For management model, please refer to the User's Guide that comes with the chassis for LED indications.

GIGABIT/FAST ETHERNET MEDIA CONVERTER Slide-In Modules LED

Please refer to the User's Manual that comes with the GIGABIT/FAST ETHERNET MEDIA CONVERTER slide-in modules or the chassis for LED indications.

5. Technical Specification

Interface	18 x Converter Slot 2 x Fixed Power
H/W Specification	Fast Ethernet with Auto MDI/MDIX Power Redundancy Plug & Play Design Chassis Power Module and FAN Monitor
LED	Power A, Power B
Power Requirement	AC Power: 100~240V 50/60Hz DC Power: 48VDC Power Consumption Without Module: 5W Full Loaded (18 Modules): 33W(Max.)
Environmental Condition	Temperature - Operation: 0 °C~ 50°C - Storage: -20°C ~ 60°C Humidity: 5% ~ 90% non-condensing
Dimension & Weight	Size: 440 x 340 x 66mm (WxDxH) Weight: 7.6Kg (Two AC Power Modules Installed)
EMC/Safety	FCC Class A, CE