



Description

Connection Technology Systems (CTS) ESW-5112-2MG is a layer 2 managed Ethernet switch equipped with 8 ports of 10/100/1000Base-T RJ-45, 2 ports of 100M/1G/2.5G/5G/10GBase-T (compliant with NBase-T standard), and 2 ports of 1/10GBase-R SFP+. The SFP+ slots can accommodate a wide range of SFP/SFP+ transceivers including single-mode, multi-mode, and WDM.

As bandwidth demand soars to new heights, 2 x 100M/1G/2.5G/5G/10GBase-T ports allow users to get up to the speed of 2.5/5Gbps. The multi-speed interfaces hence facilitate various network settings and applications, pushing through the bottleneck of 1Gbps with the same, predominant UTP Cat 5e/6 cables in the most cost-effective approach possible.

The fanless design reduces dust accumulation and power consumption, delivering zero-noise operation. Plus, ESW-5112-2MG is 8.5 inches in width, altogether making it the best solution for network infrastructure often hindered by scarce installation space.

In support of optional AC, DC, and external DC power for different installation and application environments, ESW-5112-2MG has rich functions for SMBs and enterprises that plan to deploy Ethernet services, along with the capability of versatile integration into the existing network infrastructure.

For the VLAN functionality, VLAN Translation allows service providers to implement metro Ethernet services by translating the original VLAN ID to a new VLAN ID with different priorities for different customers, whereas Selective Q-in-Q enables operators to differentiate various types of users (home/enterprise) and service levels by encapsulating VLAN tags.

With multicast networking, the model supports IGMP snooping, IGMP fast leave, IGMP filtering, and MVR (Multicast VLAN Registration) to intelligently transmit multicast traffic and deliver the IPTV service.

Besides the CTS' unique Fast Redundancy (Fast Ring v2 / Chain protocols) that prompts better topology stability, ESW-5112-2MG also comes with intelligent diagnostics which deliver real-time SFP/SFP+ and CPU temperature/utilization monitoring and therefore identify possible link/system failures in advance. It simplifies network maintenance and improves connection reliability.

ESW-5112-2MG can be easily operated with a web GUI, console, telnet CLI, and SNMP, optimizing the management experience.

ESW-5112-2MG

8 x 10/100/1000Base-T RJ-45 +

2 x 100M/1G/2.5G/5G/10GBase-T RJ-45 +

2 x 1/10GBase-R SFP+

Managed Layer 2 Ethernet Switch

Features

■ 2 x 100M/1G/2.5G/5G/10GBase-T Multi-G Ports

As bandwidth demand soars to new heights, 2 x 100M/1G/2.5G/5G/10GBase-T ports allow users to get up to the speed of 2.5/5Gbps. The multi-speed interfaces hence facilitate various network settings and applications, pushing through the bottleneck of 1Gbps with the same, predominant UTP Cat 5e/6 cables in the most cost-effective approach possible.

■ Fanless, Small-Form-Factor Design

The fanless design reduces dust accumulation and power consumption, delivering zero-noise operation. Plus, ESW-5112-2MG is 8.5 inches in width, altogether making it the best solution for network infrastructure often hindered by scarce installation space.

■ VLAN Functionality

VLAN Translation allows service providers to implement metro Ethernet services by translating the original VLAN ID to a new VLAN ID with different priorities for different customers, whereas Selective Q-in-Q enables operators to differentiate various types of users (home/enterprise) and service levels by encapsulating VLAN tags.

■ IPv4/IPv6 Dual Stack

Support IPv6 management, packet forwarding, and MLD v1/v2 snooping.

■ Intelligent Diagnostics

Greatly help network operators to monitor current CPU/memory utilization, power input voltage, system voltage, CPU temperature, and whether SFP/SFP+ transceiver parameter (e.g. temperature) is beyond or below the threshold.

■ IEEE 802.3ad Link Aggregation

A cost-efficient way to increase bandwidth and reliability by grouping multiple links into one.

■ Multicast Networking

Support IGMP snooping, IGMP fast leave, IGMP filtering, and MVR (Multicast VLAN Registration) to intelligently transmit multicast traffic and deliver IPTV service.

Target Applications

- **Ethernet Implementations for SMBs and Enterprises.**

Specification

■ Interface

- RJ-45 Port
 - 8 x 10/100/1000Base-T RJ-45
 - 2 x 100M/1G/2.5G/5G/10GBase-T RJ-45
- Fiber Port
 - 2 x 10GBase-SR/LR SFP+
 - Compatible with 1000Base-X Transceiver
- Console Port
 - 1 x RS-232 to RJ-45 Serial Port
- Terminal Block
 - 1 x Digital Input (Dry Contact)

■ Standards

- IEEE 802.3 10Base-T
- IEEE 802.3u 100Base-TX
- IEEE 802.3z 1000Base-X
- IEEE 802.3ab 1000Base-T
- IEEE 802.3bz 2.5G/5GBase-T (NBase-T)
- IEEE 802.3an 10GBase-T
- IEEE 802.3ae 10GBase-R
- IEEE 802.3ad Link Aggregation (LACP)
- IEEE 802.1ab LLDP
- IEEE 802.1p Priority
- IEEE 802.1q Tag VLAN
- IEEE 802.1d STP
- IEEE 802.1w RSTP
- IEEE 802.1x Port-Based Network Access Control

■ H/W Specification

- MAC Address Table: 16K
- Non-Blocking Switching Fabric: 96Gbps
- Throughput @ 64Bytes: 71.4Mpps
- Packet Buffer: 12Mbit
- Jumbo Frame: 12K Bytes
- Store and Forward Switching Mechanism
- Auto-Cross Over for MDI/MDIX in TP Ports
- Auto-Negotiation in TP Ports
- Full/Half Duplex Mode Operation

■ LED

- Power A & B, Status, COM, Speed/Link/Act

■ Forward/Filter Rate

- 10M: 14,880/14,880pps
- 100M: 148,800/148,800pps
- 1000M: 1,488,000/1,488,000pps
- 2.5G: 3,720,000/3,720,000pps
- 5G: 7,440,000/7,440,000pps
- 10G: 14,880,000/14,880,000pps

■ Layer 2 Switch Features VLAN

- IEEE 802.1q VLAN
 - VLAN ID: 4094 IDs
 - VLAN Concurrent Groups: 4K VLAN Groups
- Port-Based VLAN
- VLAN Translation
- Q-in-Q Double Tag with Configurable EtherType
- Selective Q-in-Q

QoS

- QoS 802.1p CoS / DSCP
- Scheduling Algorithm
 - Weighted Round Robin (WRR)
 - Strict Priority Queuing (SPQ)
- QoS Priority Queues: 8 Queues
- 802.1p P-bit & DSCP Remarking
- Port-Based Rate Limit (Ingress/Egress)

Network Redundancy

- IEEE 802.1d Spanning Tree Protocol (STP)
- IEEE 802.1w Rapid Spanning Tree Protocol (RSTP)
- Fast Redundancy (Fast Ring v2 / Chain Protocols)
- IEEE 802.3ad Link Aggregation (LACP)
- Static Port Trunking
- Up to 6 Aggregation Groups, 8 Ports per Group

Multicast

- IGMP Snooping v1/v2/v3
- IGMP Fast Leave and Querier
- MLD v1/v2 Snooping
- MLD Querier
- IGMP/MLD Snooping Group: 512/128 Groups
- IP Multicast Filter with Segment and Profile
- Static Multicast Group
- Multicast VLAN Replication (MVR)

IPv6 Feature

- IPv6 over Ethernet (RFC 2464)
- IPv6 Addressing Architecture (RFC 4291)
- IPv6 Dual Stack (RFC 4213)
- ICMPv6 (RFC 4884)
- Path MTU Discovery for IPv6 (RFC 1981)
- Neighbor Discovery (RFC 4861)
- DHCPv6 Client

Layer 2 Protocol Tunneling

- CDP, LLDP, STP, VTP, LACP, PAgP & UDLD

Access Control List

- Physical Port, Ether Type, MAC Address, VID, ToS/DSCP, Protocol Type, L4 Port and IP Address
- ACL Entries (IPv4: 64 Entries; IPv6: 32 Entries)

■ Security

- 802.1x Port Base Access Control
- 802.1x RADIUS Authentication
- 802.1x MAC Authentication Bypass
- RADIUS Based VLAN Assignment
- DHCP Option 82 Relay Agent
- DHCP Option 82 with Configurable Circuit and Remote ID
- DHCP Snooping and DHCP Server Trust Port
- IP Source Guard
- Port Isolation
- Storm Control
- Unknown Unicast/Unknown Multicast /Broadcast
- MAC Limiter
- Loop Detection

■ Management

- SNMP v1, v2c & v3
- /Web/Telnet/HTTPS/SSHv2/CLI
- Text Base CLI Configure File
- Port Configuration
 - Speed/Duplex/Flow Control/Description
 - NTP with Daylight Saving Time
- Layer 2 Control Protocol Filter
- Static MAC Address Table
- LLDP

■ Maintenance

Diagnostic

- Port Mirror
- ICMP Ping
- Event log
- Syslog
- SFP SFF-8472 DDMI & Threshold Monitor
 - Temp/Volt/TX Bias/TX Power/RX Power
- CPU
 - Temperature/Utilization
- Memory Statistics
- System Voltage
- Cable Diagnostics

Upgrade/Restore

- Firmware Upgrade/Downgrade
 - HTTP/HTTPS/FTP/TFTP
 - DHCP Auto-provision via DHCP Option 60/43
- Configuration Upload/Backup
 - HTTP/HTTPS/FTP/TFTP
 - DHCP Auto-provision via DHCP Option 60/43

■ Power Requirement

- Input AC: 100V ~ 240V, 50/60Hz, 0.4 ~ 0.2A
- Input DC: 48V, 0.4A
 - 12V, 3.33A (R7B Adapter)
- Power Adapter: 100 ~ 240VAC, 48VDC
- Max. Power Consumption: 26.4W (90BTU/h)

■ Environmental Condition

- Operation: 0°C ~ 50°C***
- Storage: -20°C ~ 60°C
- Humidity: 5% ~ 90%, Non-Condensing

■ Dimension & Weight

- Size: 210 x 235 x 44mm (W x D x H)
- Weight: 1.8kg

■ EMC/Safety

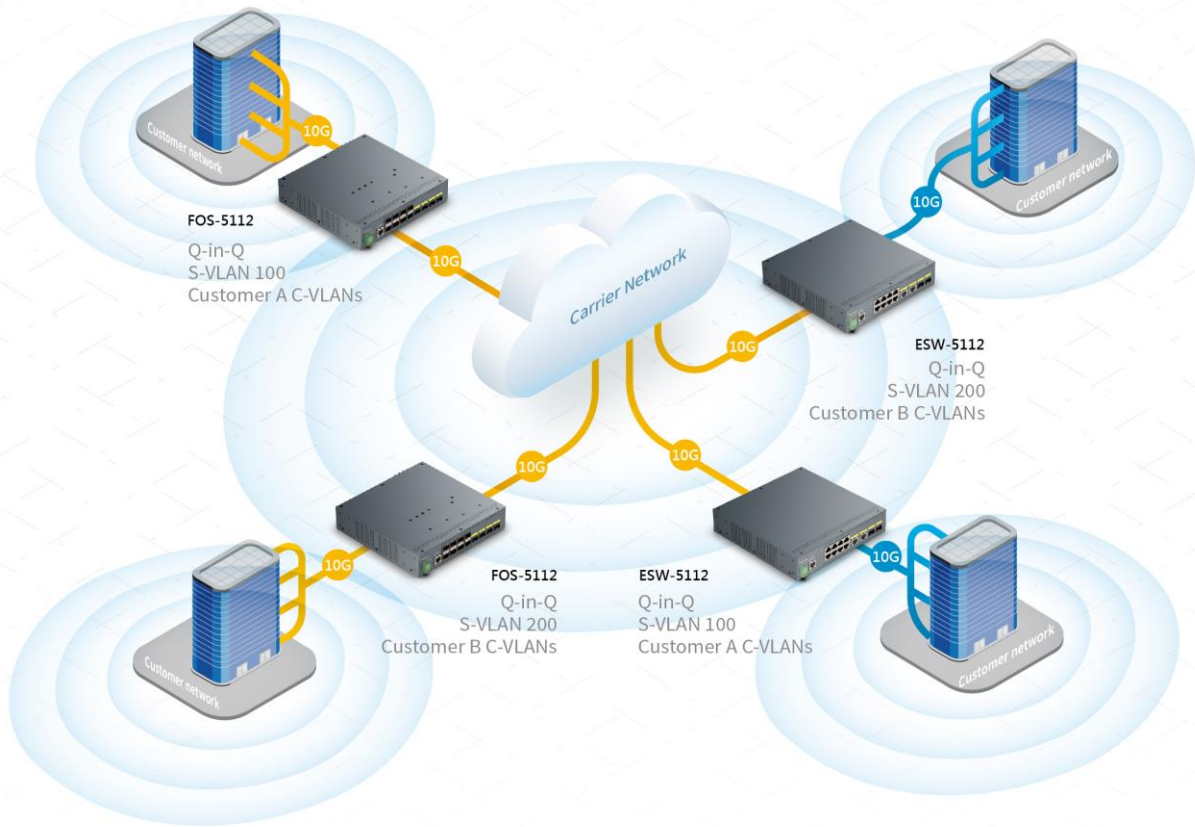
- FCC Class A, CE
- ESD
 - Air Discharge: +/-8kV
 - Contact Discharge: +/-4kV
- EFT
 - AC Input: +/-1kV
 - DC Input: +/-0.5kV
 - Digital Input: +/-0.5kV
- Surge Protection: +/-2kV

* Under development function

** Future feature

*** Please use industrial SFP/SFP+ transceiver (operation temperature can up to 85°C) on SFP+ slots (port 11~12) when ESW-5112 is working under 45~50°C.

Application Diagram



Order Information

Model	Fiber Port			TP Port		Support Power Source
	Speed	Type	Ports	Speed	Ports	
ESW-5112-2MG-1A	1/10Gbps	SFP+	2	10/100/1000Mbps	8	1 x Fixed Internal AC
				100M/1G/2.5G/5G/10Gbps	2	
ESW-5112-2MG-1D	1/10Gbps	SFP+	2	10/100/1000Mbps	8	1 x Fixed Internal DC 48V
				100M/1G/2.5G/5G/10Gbps	2	
ESW-5112-2MG-1AE	1/10Gbps	SFP+	2	10/100/1000Mbps	8	1 x Fixed Internal AC 1 x Fixed External DC 12V
				100M/1G/2.5G/5G/10Gbps	2	
ESW-5112-2MG-1E	1/10Gbps	SFP+	2	10/100/1000Mbps	8	1 x Fixed External DC 12V
				100M/1G/2.5G/5G/10Gbps	2	

Accessory

SFP-51

Model	Specification					
	Speed	Type	Connector	Distance	Wavelength	Temperature
SFP-51FC	10Gbps	MM	LC	300M	850nm	0°C~70°C
SFP-51FC(SM-10/20)	10Gbps	SM	LC	10/20KM	1310/1310nm	0°C~70°C
SFP-51W2A(SM-10/20)	10Gbps	WDM	LC	10/20KM	TX: 1270/1270nm RX: 1330/1330nm	0°C~70°C
SFP-51W2B(SM-10/20)	10Gbps	WDM	LC	10/20KM	TX: 1330/1330nm RX: 1270/1270nm	0°C~70°C

SFP-31

Model	Specification					
	Speed	Type	Connector	Distance	Wavelength	Temperature
SFP-31FC-DR	100/1000Mbps	MM	LC	550M/2KM	1310nm	0°C~70°C
SFP-31FC(SM-10)-DR	100/1000Mbps	SM	LC	10KM	1310nm	0°C~70°C
SFP-31W2A(SM-10/20)-DR	100/1000Mbps	WDM	LC	10/20KM	TX: 1310/1310nm RX: 1550/1550nm	0°C~70°C
SFP-31W2B(SM-10/20)-DR	100/1000Mbps	WDM	LC	10/20KM	TX: 1550/1550nm RX: 1310/1310nm	0°C~70°C
SFP-31FC	1000Mbps	MM	LC	550M	850nm	0°C~70°C
SFP-31FC(SM-10/20)	1000Mbps	SM	LC	10/20KM	1310/1310nm	0°C~70°C
SFP-31W2A(SM-10/20)	1000Mbps	WDM	LC	10/20KM	TX: 1310/1310nm RX: 1550/1550nm	0°C~70°C
SFP-31W2B(SM-10/20)	1000Mbps	WDM	LC	10/20KM	TX: 1550/1550nm RX: 1310/1310nm	0°C~70°C
SFP-31FC-D	1000Mbps	MM	LC	550M	850nm	-40°C ~ 85°C
SFP-31FC-(MM-02)-D	1000Mbps	MM	LC	2KM	1310nm	-40°C ~ 85°C
SFP-31FC(SM-10/20)-D	1000Mbps	SM	LC	10/20KM	1310/1310nm	-40°C ~ 85°C
SFP-31W2A(SM-10/20)-D	1000Mbps	WDM	LC	10/20KM	TX: 1310/1310nm RX: 1550/1550nm	-40°C ~ 85°C
SFP-31W2B(SM-10/20)-D	1000Mbps	WDM	LC	10/20KM	TX: 1550/1550nm RX: 1310/1310nm	-40°C ~ 85°C

* SFP-31xxx-DR modules only support 1000Mbps on ESW-5112-2MG

Connection Technology Systems Inc. (HQ)

Tel.: +886-2-2698-9661
E-mail: cts_esales@ctsystem.com
info@ctsystem.com
Sales Direct Line: +886-2-26989201

Connection Technology Systems NE AB

Tel: +46-31-221980
E-mail: info@ctsystem.se

Connection Technology Systems Central

Europe (COMPONET Handels GmbH)
Tel: +43-1-235 05 66-0
E-mail: cts_ce@ctsystem.com

Connection Technology Systems Japan

Tel: +81-6-6450-8890
E-mail: cts_japan@ctsystem.com

Connection Technology USA Inc.

Tel: +1-510-509-0304
Sales Direct Line: +1-510-509-0305
E-mail: cts_us@ctsystem.com

Connection Technology Systems India Private Limited

E-mail: kirti_simha@ctsystem.com



Connection Technology Systems (CTS) reserves the right to change specification without prior notice.