



## Description

Connection Technology Systems (CTS) MCT-RACK-12-MGM, the compact management media converter chassis, provides 12 slots for mixed installation of non-managed and managed MCT series media converters.

MCT-RACK-12-MGM provides network administrator with the ability to configure and monitor the in-rack managed media converter. If installing with non-managed media converter, the power source of in-rack converter could be simply turn on or off via the management of MCT-RACK-12-MGM. Moreover, if media converter module supports IEEE 802.3ah (OAM) standard, MCT-RACK-12-MGM can also configure and monitor the status of remote media converter.

Hot-swappable power module enhances MCT-RACK-12-MGM the flexibility of installation. Moreover, the feature of being equipped with two power modules into MCT-RACK-12-MGM has a redundancy that provides seamless power changeover when one of power module is fail.

MCT-RACK-12-MGM offers SSHv2 and SNMPv3 security mechanism to protect users against anyone with malicious intent. SSHv2 and SNMPv3 encrypt the user password and relevant information to make it harder to be sniffed by other people.

The installation & operation procedures of MCT-RACK-12-MGM are simple & straight forward. The standard SNMP management and WEB-based management make MCT-RACK-12-MGM becomes the best choice of network administrator.

## MCT-RACK-12-MGM

12 Slots Compact Management  
Media Converter Chassis

# Features

## ■ 12 Hot-swappable Converter Slots

Up to 12 Media Converter Modules can be powered by MCT-RACK-12-MGM without the Requirement of external Power Supplies.

## ■ Power Redundancy

With Two Hot-Swappable Power Modules, Power Redundancy could be satisfied via the Selection of Power Supply (2DC, 2AC or 1DC+1AC) to prevent the Network from Unexpected Power Outage.

## ■ Centralized Management

MCT-RACK-12-MGM can be installed with MCT series Media Converters to keep them well-organized and neatly-deployed.

## ■ Secured Device Access

MCT-RACK-12-MGM supports Secure Shell Protocol Version 2(SSHv2) and Simple Network Management Protocol Version 3 (SNMPv3) to provide network security by encrypting administrator traffic during Telnet and SNMP sessions.

## ■ Smart Fan With Auto-Speed Control

Besides high quality fan to enhance heat dissipation, Smart Fan can adjust fan speed according to temperature to have better control of the device's power consumption and noise.

## ■ Real-time Temperature and Voltage Monitoring

CTS integrates temperature and voltage sensors into the design of the MCT-RACK-12-MGM. The temperature sensor detects internal temperature and automatically adjusts the smart fan speed, while the voltage sensor provides voltage information, which can serve as a reference for device lifespan.

## ■ Support for All Slot 10G MCT Series

With the widespread use of the internet, people are increasingly reliant on it. The demand for high bandwidth, especially for video streaming and gaming, continues to grow. To meet these demands, the MCT-RACK-12-MGM is designed to support the installation of our 10G media converters, the MCT-5002 series, in all slots.

# Specification

## ■ Interface

- RJ-45 Port  
1 x 10/100Base-T RJ-45
- Console Port  
1 x RS-232 to RJ-45 Serial port
- USB-A Host  
1 x for backup and restore
- Terminal Block  
1 x Digital Input (Dry contact)  
1 x Digital Output
- Media Converter Slots  
12 x Hot-Swappable
- Power Slots  
2 x Hot-Swappable
- Smart Fan  
3 x Hot-Swappable

## ■ Standards

- IEEE 802.3 10Base-T
- IEEE 802.3u 100Base-TX

## ■ H/W Specification

- MAC Address Table: 2K
- Jumbo Frame: 9K Bytes
- Packet Buffer: 1Mbit
- Store and Forward Switching Mechanism
- Auto-Cross over for MDI/MDI-X in TP port
- Auto-Negotiation in TP Port
- Full/Half Duplex Mode Operation
- Power Redundancy\*

## ■ LED

Power A, Power B, Status, LAN, COM

## ■ Forward/Filter Rate

10M: 14,880/14,880pps  
100M: 148,800/148,800pps

## ■ Ventilation

- Smart Fan  
3 x Speed Auto-adjusting Fan

## ■ Security

- 802.1x RADIUS Authentication
- TACACS Authentication

## ■ Chassis Management Methods

- SNMP v1,v2c & v3
- Web (HTTP/HTTPS)
- CLI (Console/Telnet/SSHv2)
- NTP with Daylight Saving Time

## ■ Maintenance

### Diagnostic

- ICMP Ping
- Event log
- Syslog
- Fan speed
- System Monitor  
Temperature/Voltage

### Upgrade/Restore

- Firmware Upgrade/Downgrade  
HTTP/HTTPS/TFTP/FTP
- DHCP Auto-provision via DHCP Option 60/43
- Configuration Upload/Backup  
HTTP/HTTPS/TFTP/FTP
- DHCP Auto-provision via DHCP Option 60/43

## ■ Power Requirement

- AC Input: 100~240VAC, 50/60Hz, 1.4~0.7A
- DC Input: 48VDC
- Max. Power Consumption: 72W (245.6 BTU/h)

## ■ Environmental Condition

- Operation: 0°C~50°C
- Storage: -20°C~60°C
- Humidity: 5%~90% RH, Non-Condensing

## ■ Dimension & Weight

Size: 440 x 342 x 44mm (W x D x H)  
Weight: 5.7kg (without Module installed)

## ■ Installation Method

- Standard 19-Inch Rack Installation
- Desktop Installation

## ■ EMC/Safety

FCC Class A, CE

## ■ Media Converter Management Function\*\*

### Firmware Upgrade

- Local
- Remote\*\*\*

### Configuration

- Link Alarm / Link Pass Through
- Port Configuration  
(Duplex/Speed/Fiber Speed Auto-Sensing)
- Port based rate limit
- Storm Control (Broadcast)
- VLAN  
IEEE 802.1q VLAN  
VLAN ID: 4094 IDs  
VLAN Concurrent Groups: 8 VLAN Groups  
Q-in-Q Double tag
- OAM (Loopback)\*\*\*

### Monitor

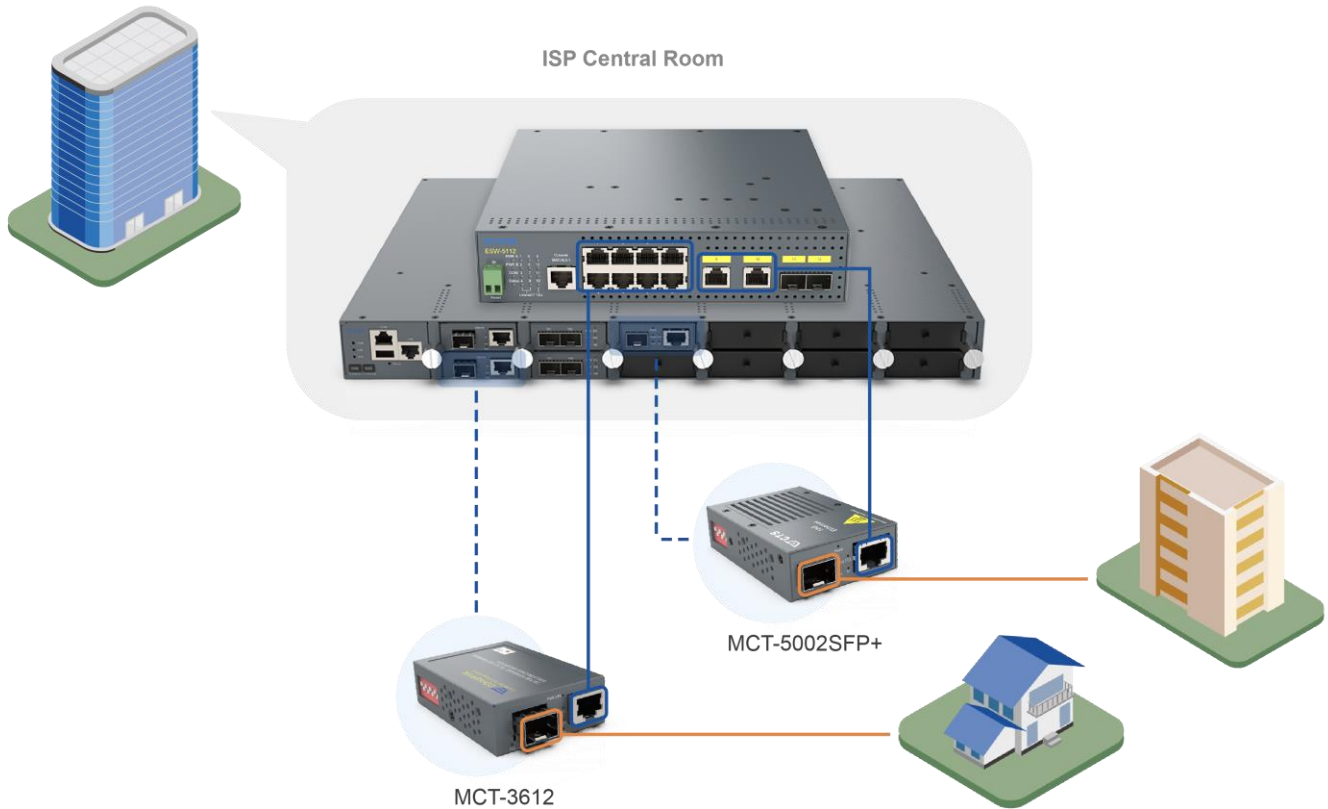
- Port Status
- Port Traffic Counter
- SFP/DMI Information

\*Only support when equipping two power module

\*\*Manage via the RJ-45 interface on Chassis and only support management model (MCT-3512/3612)

\*\*\*Only support on MCT-3512

# Application Diagram



## Order Information

Model	Module Slot Amount		Support Power Source	Remark
	Converter Module	Power Module		
MCT-RACK-12-MGM	12	2	Without Power Module	Management Model
MCT-RACK-12-MGM-1A	12	2	1 AC	Management Model
MCT-RACK-12-MGM-2A*	12	2	2 AC	Management Model
MCT-RACK-12-MGM-1D	12	2	1 DC	Management Model
MCT-RACK-12-MGM-2D*	12	2	2 DC	Management Model
MCT-RACK-12-MGM-1AD*	12	2	1 AC + 1 DC	Management Model
MCT-RACK-12-MGM-AC POWER	-	-	-	AC Power Module
MCT-RACK-12-MGM-DC POWER	-	-	-	DC Power Module

\*The model equipped two power modules supports power redundancy, enhance reliability that efficiently keeps MCT-RACK-12-MGM in steady power operation.

# Support Module

## MCT Series

Model	TP Port		Fiber Slot		
	Speed	Port	Speed	Type	Slot
MCT-100	10/100Mbps	1	100Mbps	BTFX/W2X/SFP	1
MCT-3002	10/100/1000Mbps	1	1000Mbps	BTFX/W2X/SFP	1
MCT-3002-DR	10/100/1000Mbps	1	100/1000Mbps	BTFX/W2X/SFP	1
MCT-3512	10/100/1000Mbps	1	1000Mbps	BTFX/W2X/SFP	1
MCT-3512-DR	10/100/1000Mbps	1	100/1000Mbps	BTFX/W2X/SFP	1
MCT-3612	10/100/1000Mbps	1	1000Mbps	BTFX/W2X/SFP	1
MCT-3612-DR	10/100/1000Mbps	1	100/1000Mbps	BTFX/W2X/SFP	1
MCT-5002SFP+	100M/1G/2.5G/5G/10Gbps	1	10Gbps	SFP+	1
MCT-5002FSMSFP+	-	-	1/10Gbps	SFP+	2

**Connection Technology Systems Inc. (HQ)**  
 Tel.: +886-2-2698-9661  
 E-mail: [cts\\_esales@ctsystem.com](mailto:cts_esales@ctsystem.com)  
[info@ctsystem.com](mailto:info@ctsystem.com)  
 Sales Direct Line: +886-2-26989201

**Connection Technology Systems NE AB**  
 Tel: +46-31-221980  
 E-mail: [info@ctsystem.se](mailto:info@ctsystem.se)

**Connection Technology Systems Central Europe (COMPONET Handels GmbH)**  
 Tel: +43-1-235 05 66-0  
 E-mail: [cts\\_ce@ctsystem.com](mailto:cts_ce@ctsystem.com)



**Connection Technology Systems Japan**  
 Tel: +81-6-6450-8890  
 E-mail: [cts\\_japan@ctsystem.com](mailto:cts_japan@ctsystem.com)

**Connection Technology USA Inc.**  
 Tel: +1-510-509-0304  
 Sales Direct Line: +1-510-509-0305  
 E-mail: [cts\\_us@ctsystem.com](mailto:cts_us@ctsystem.com)

**Connection Technology Systems India Private Limited**  
 E-mail: [kirti\\_simha@ctsystem.com](mailto:kirti_simha@ctsystem.com)

Connection Technology Systems (CTS) reserves the right to change specification without prior notice.