

FIBER ETHERNET SOLUTION

COMPREHENSIVE SOLUTION FOR
HIGH GRADE COMMUNICATION



- Access Switch
- Fiber CPE Switch
- Wi-Fi Mesh
- Industrial Switch

CTS

About CTS.....	4
Why CTS.....	5
Success Case.....	6

Fiber Switch Solutions

Access Switch

- 19/8.5-inch 100G Fiber Managed Access Switch 16
- 8.5-inch All 10G Fiber Managed Access Switch 17
- 19/8.5-inch 10G Fiber Managed Access Switch 18
- 19/8.5-inch 1G Fiber Managed Access Switch..... 19
- 19/8.5-inch 10G Ethernet Managed Access Switch 20
- 19/10-inch 1G Ethernet Managed Access Switch 21
- 19/8.5-inch PoE Managed Switch 22

Fiber CPE Switch

- Fiber Managed CPE Switch 23

WiFi Mesh Solutions

Wi-Fi Mesh

- AX5400 Wi-Fi Mesh Router..... 24

Rugged/Industrial Switch Solutions

Managed Rugged Switch

- 10G Rugged Managed Switch 27
- 1G Rugged Managed Switch 28



Managed Industrial Switch

- 10G Industrial Managed Switch 29
- 1G Industrial Managed Switch 30

| Accessory

SFP/SFP+ Transceiver

- 10G Ethernet 33
- Gigabit Ethernet 33
- Copper Ethernet 34
- Industrial 10G Ethernet 34
- Industrial Gigabit Ethernet 34

Lightning Protector

- Lightning Protector 35

External Battery Unit

- External Battery Unit 35

Industrial Power Supply

- Industrial Power Supply 35

About CTS

- CTS is a leading network solution provider headquartered in Taiwan. We are professional in design and manufacture products for the Last Mile Connectivity. With branch offices in Japan, Sweden, Austria, India, we aim to develop solutions to achieve sustainability, and grow together with partners worldwide.
- Founded in 1998, public since 2015
- 142 employees internationally, 20% belong to R&D
- 350+ Customers in over 40 countries
- 97.8% Customer Satisfaction

Our Mission

Find the market gap from user scenario and application

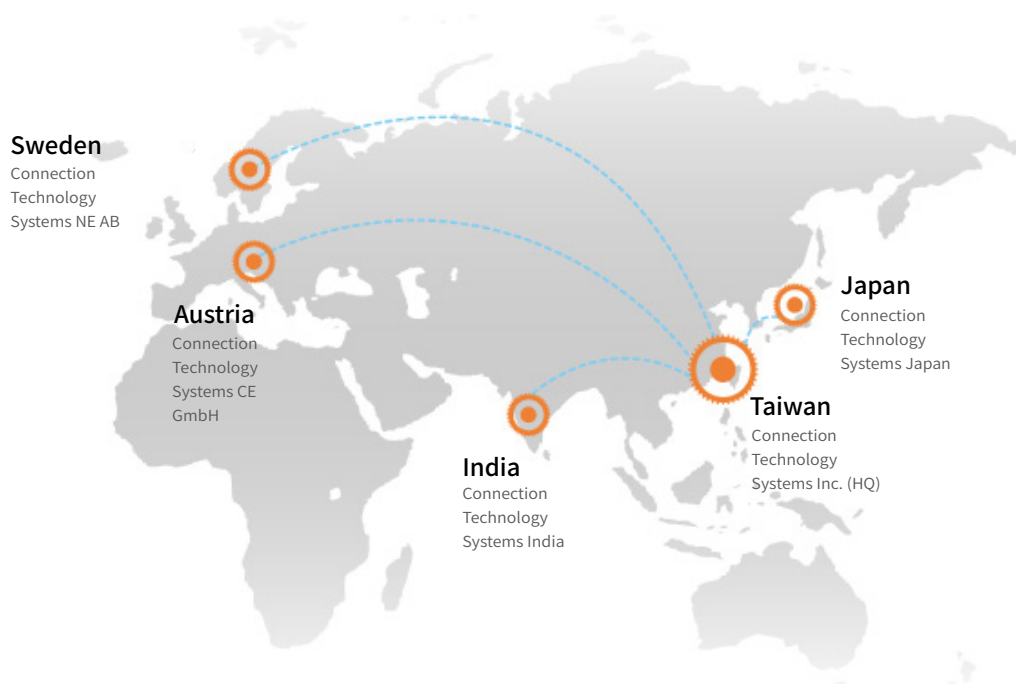
Design reliable products that connect people at the Last Mile

Fulfill customer demands with differentiated and sustainable solutions

Sustainability

We provide reliable and sustainable solution for our customers so they can use for a long time, reducing the waste of our planet. We also adhere to the most stringent global compliance standards.

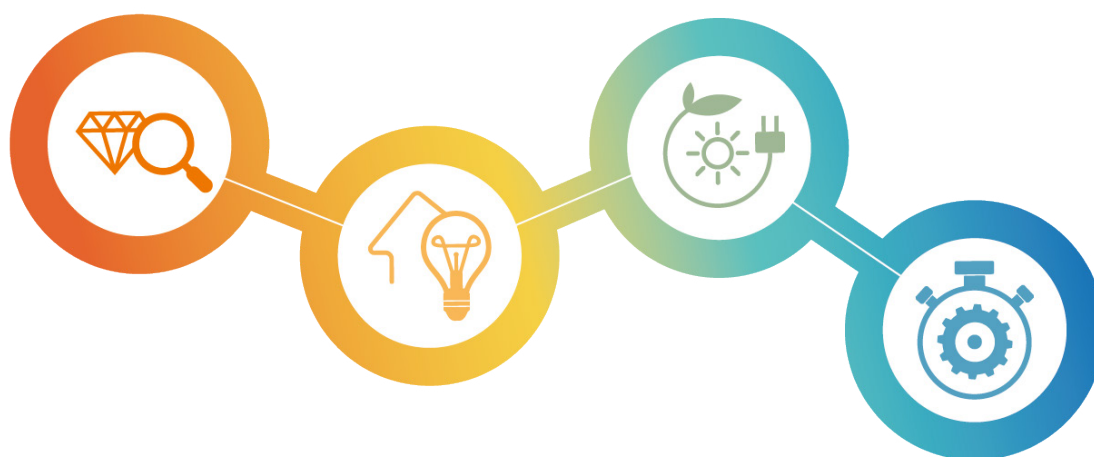
CTS acknowledges the importance of the UN Sustainable Development Goals (SDGs) and we' ve integrated into our business strategy. We' ve started to work with our suppliers and partners on the GHGs and PCF. We plan to release sustainability report to our stakeholders every year.



Why CTS

The Spirit of Pursuing Excellence

For CTS, our achievement is defined by each successful story our customers have experienced. Until this day, with 20 years experiences in the field, CTS' innovative spirit and passion still driving the company to pursue excellence. Through continuously interact with the clients and the markets, CTS has insisted on keeping "Differentiation and Glocalization" which has make us one of the leading solution providers for telecom companies, network operators, and broadband service providers all over the world.



Quality Assurance

Engineering Design

- SW/HW Collaboration
- Design Verification Test
- Design for Manufacturing
- Solution & Risk Analysis

Own Production

- Made in Taiwan
- IQC/PQC/FQC/OQC
- First Pass Yield
- Dynamic Burn-in Test

Reliability Test

- High Temperature Operating
- High Temperature Storage
- Damp Heat Cycling Test
- Accelerated Aging Test
- MTBF with MIL-HDBK-217F
- ISO 9001, 14001, CE, FCC

Timely Services

- Engineering Services
- Local Branch Support
- RMA Center
- Root Cause Analysis

Flexible FTTB Solution for Mid-size Apartment Buildings in Middle East

Background

The client is the top telecom among the mid-tier telecom in the Middle East, whose main services include telephony, Internet, and TV/IPTV services. This company started its Fiber to the Apartment Building deployment projects in hope to provide reliable, secure, and fast network connectivity to home premises ...

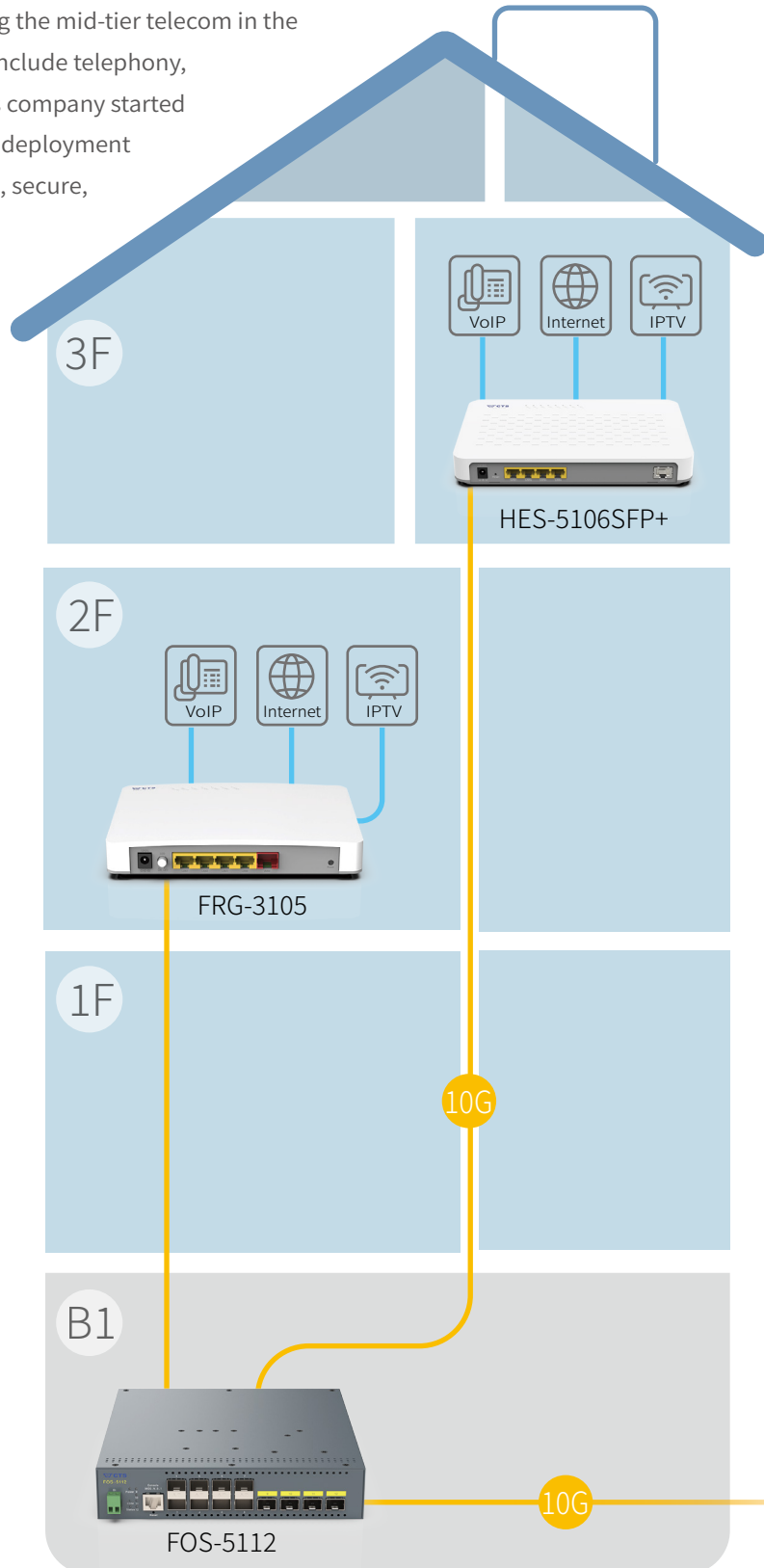
CTS Products



FOS-5112
8-Port 1G Fiber
+ 4-Port 10G Fiber
Managed Switch



FOS-3110/FOS-3114
10/14-Port Gigabit
Fiber Managed Switch





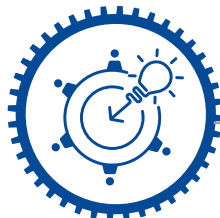
Challenge

- ① Need high uplink bandwidth to Internet service.
- ② Average 8~10 units in the apartment building.
- ③ Confined installation space.
- ④ Limited DC power sources.
- ⑤ Low noise tolerance.
- ⑥ Need to manage large amount of devices.
- ⑦ Collect usage data to improve its service.



Solution & Benefit

- ① Supports 4 1/10G fiber uplink SFP+ slots.
- ② 8/10/14 dual rate fiber LAN ports up to 1G speed.
- ③ Supports cabinet-mount or rack-mount into 9, 12 and standard 19-inch racks.
- ④ Built-in AC PSU requires less hassles to find DC power source in residential environment.
- ⑤ Fanless design eliminates residents' complaint about noise, also ensures longer life span.
- ⑥ VLAN, QoS, DHCP and IGMP Snooping for better and more secure service provision.
- ⑦ Remote management through IP Telnet, WEB, SNMP and SSH to reduce maintenance costs.



Networking Consultant

Providing advice on application layout and two solutions within three months.



Trustworthy Partner

Constant communication and field research aim to pin point customers' problems.



In-house Designer

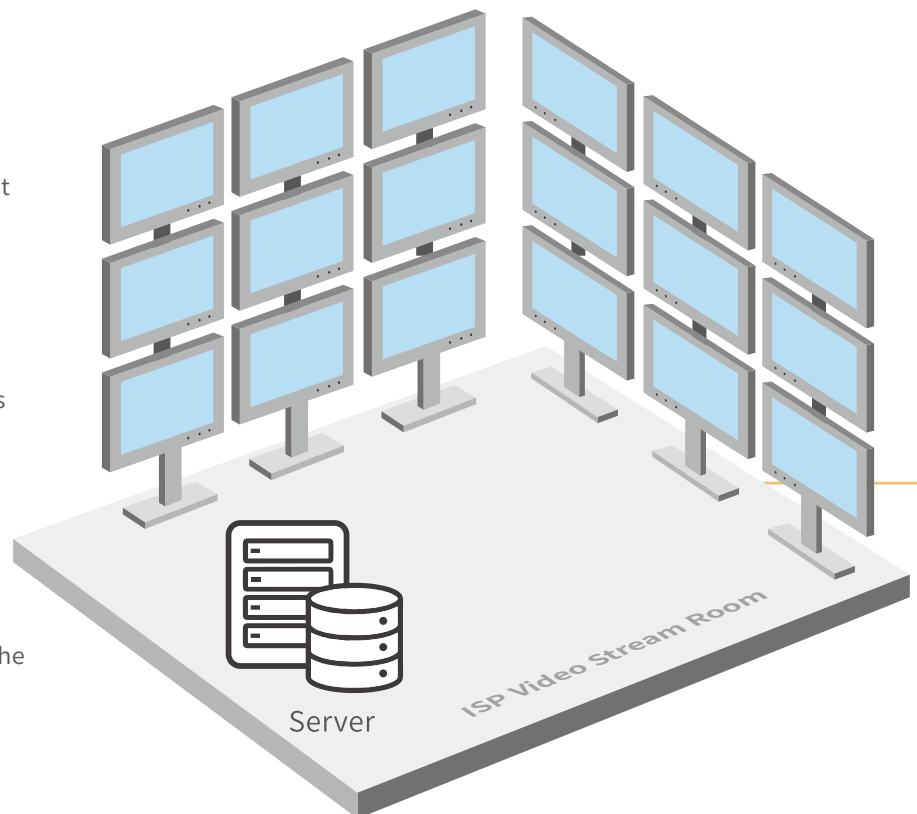
Collaboration with customers to create the best solutions to address the issues.

PoE Solution for IPTV Service in Japanese Apartment Complex

Background

One of the top apartment management company in Japan has been providing Satellite IPTV service in each of their apartment unit since 2002. While its leasing business rapidly expands, the original solution can no longer fulfill its tenants' demands for better video streaming quality.

The apartment management company was looking for a new solution with best price-performance ratio from a vendor who can promise the best quality and sales services ...

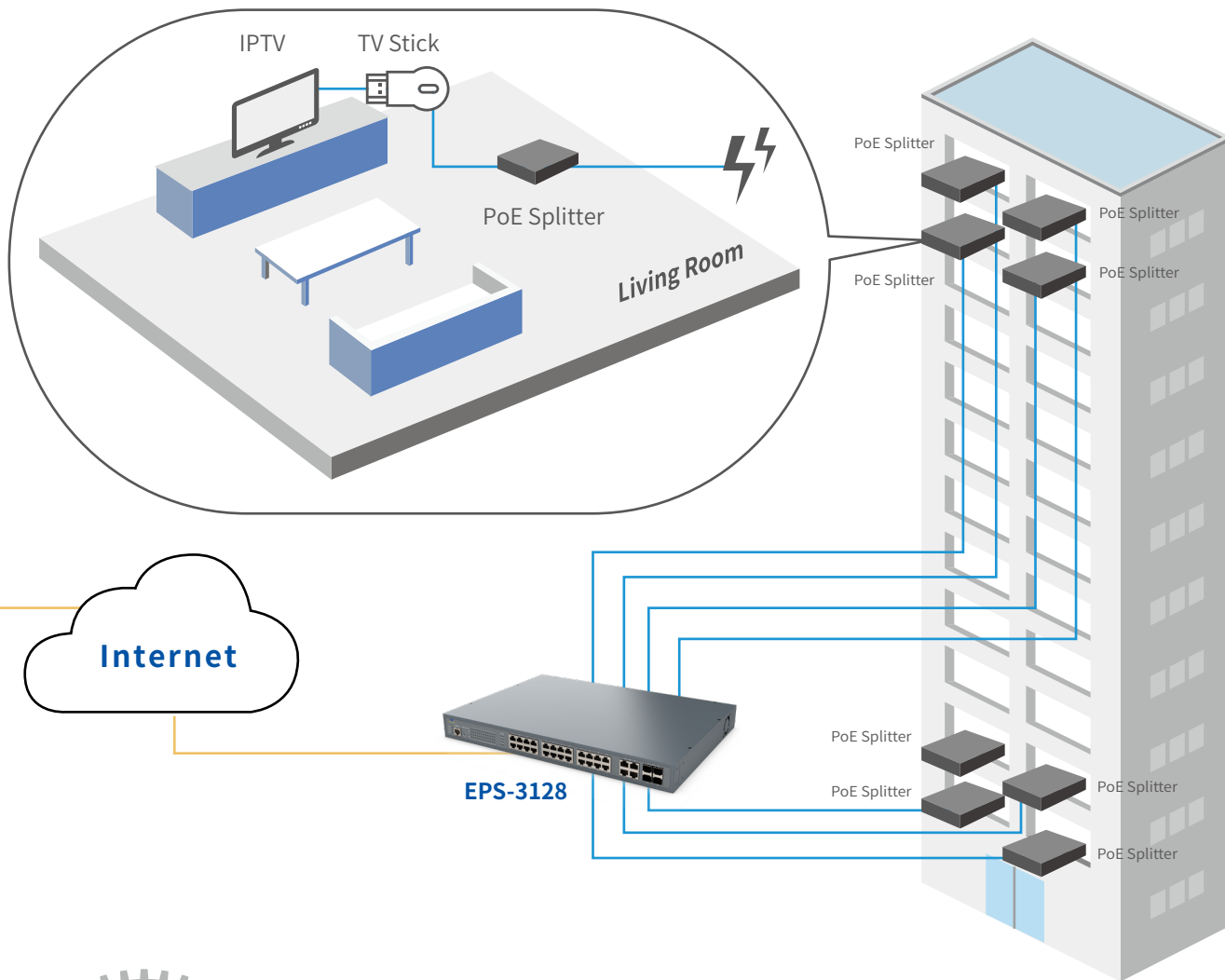


Challenge

- ① Average 21~24 units in one building, and each unit has a TV stick needing connecting.
- ② The client is keen to reduce wiring complexity by PoE solution.
- ③ Require features that can enable smooth IPTV streaming service.

Solution & Benefit

- ① 24 PoE-ports provide up to 30W per port and maximum transmission distance of 100m, perfect for powering TV sticks without extra wiring.
- ② IGMP Snooping, IGMP Fast Leave, IGMP Filtering, various QoS classifications and rate limit control to deliver smooth IPTV service.
- ③ Alarm threshold, port priority, quick control, and schedule-based provide efficient and effective management features on PoE ports.



EPS-3128

24-Port Gigabit **802.3at PoE** + 4-Port Gigabit Combo Managed Switch



Networking Consultant

Local team provides quick and on-time support.



Trustworthy Partner

Proactive response to customers' technical issues.



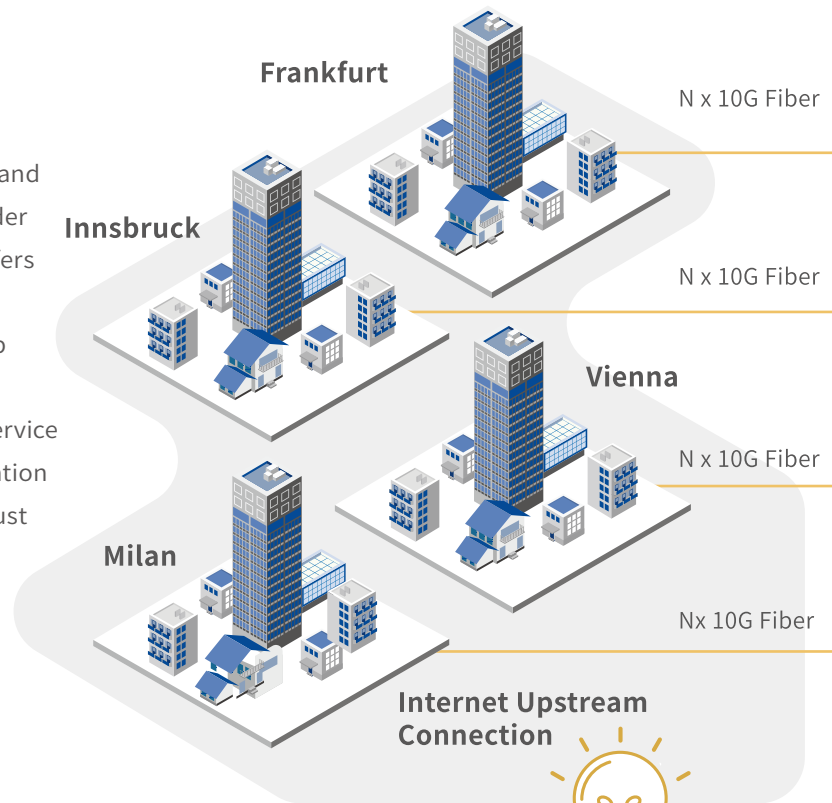
In-house Designer

Continuously improving through FW and HW updates.

Austria's Regional Service Provider Chose CTS Switches for Its Network Infrastructure

Background

Established in 1999, Citynet is a progressive and modern Internet operator and service provider located in the City of Hall in Tyrol. Citynet offers Internet access, mobile Internet, VoIP and IPTV to private home users. It also offers web space, security products, cloud services and server housing for business customers. Its service structure has made itself an excellent reputation among the areas. However, the company must keep looking for the best solutions to keep up with its customers' ever-growing requests on service quality ...



Challenge

- ① Being owned by the city's utility company raise the public expectation for outstanding service quality.
- ② Higher Internet speed is inevitable trend in near future.
- ③ Need a fine selection of access switch that suits the various applications.
- ④ Has to create differentiation in order to meet the competition from national or international operators.

Solution & Benefit

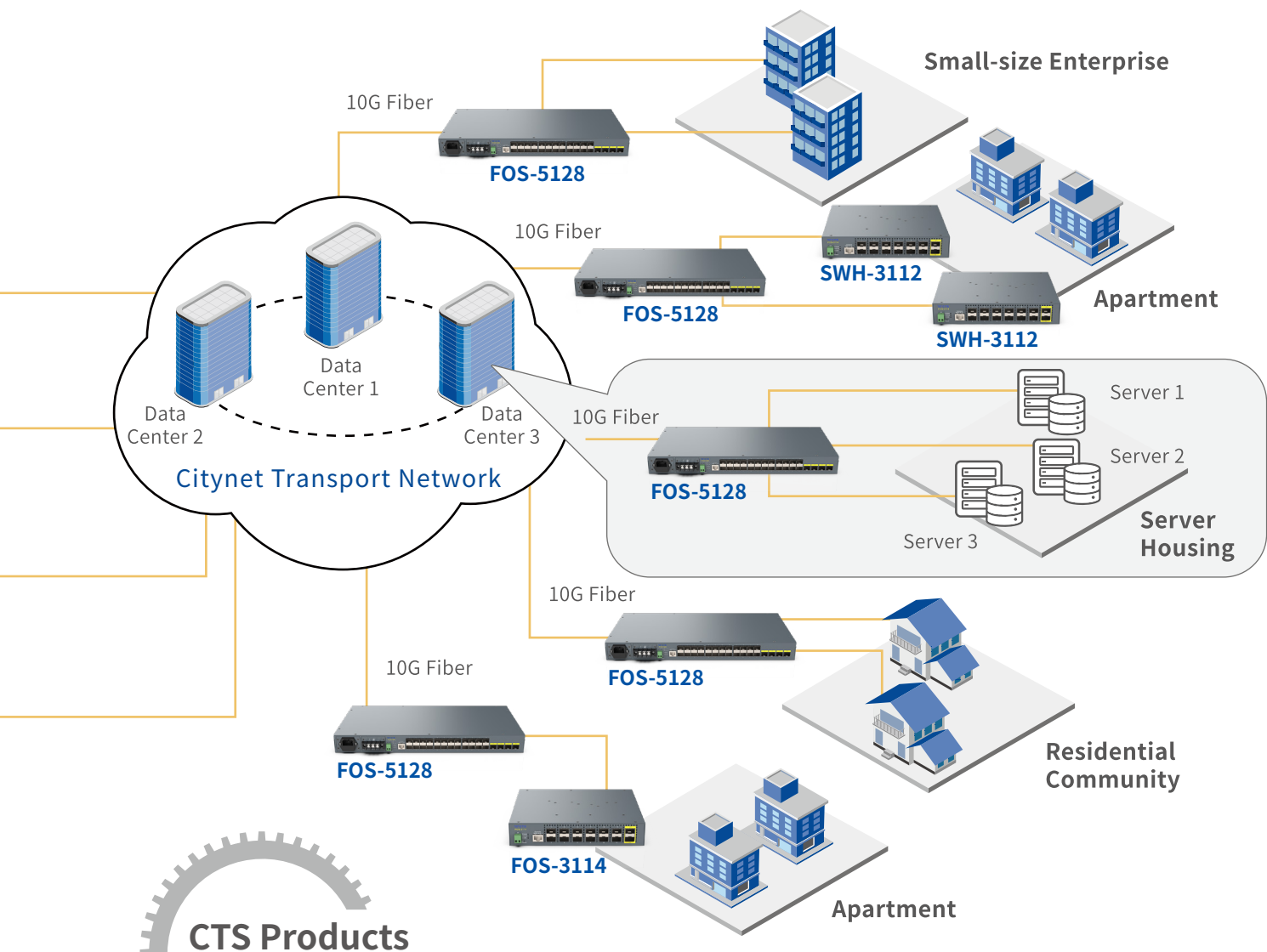
- ① Stable and reliable network connection with very few defects.
- ② Collaboration for 10 Gigabit network infrastructure in keeping with the vision for a future-proof network.
- ③ Offered scalable solutions for different deployment scenarios and applications including managed 10G to 1G Layer 2 Ethernet Fiber and CPE switches.
- ④ Robust centralized network management, monitoring and provisioning can fulfill the commitment of reliable service.

“ The important thing for technician was the usability. CTS products are easy to integrate and they are reliable and very stable. ”



Manuel Kofler, Head of IT,
Stadtwerke Hall in Tirol GmbH





CTS Products



FOS-5128
24-Port 1G + 4-Port **10G** Fiber Managed Switch



FOS-3114
14-Port Gigabit Fiber Managed Switch



SWH-3112
8-Port Gigabit Copper + 4-Port Gigabit Combo Managed Switch



Networking Consultant
Regional technical support quickly identified and resolved the issues during the deployment stage.



Trustworthy Partner
CTS works closely with the customers to provide the solutions that help achieve their visions.



In-house Designer
Robust management functions enable the operator to provide best service to the end customers.



All-inclusive Fiber Optic Switch Solutions

CTS FOS 51 Series can work as a fiber backbone switch with 8/24/48 100/1000Base-X dual-speed SFP slots and extra 4 1/10GBase-X dual-speed SFP+ slots, offering great flexibility to work with different SFP/SFP+ transceivers. Through fiber optic cabling, FOS can connect to a CTS CPE Fiber Switch within up to 120km. CTS Fiber Switch also supports powerful Layer 2 protocol functions, robust security features and management interfaces.

- IEEE 802.1q Tagged VLAN, Q-in-Q, Port-based VLAN and VLAN Translation
- IGMP Snooping v1, v2 and v3; MLD Snooping v1 and v2
- Layer 2, 3 and 4 Access Control List
- IEEE 802.1p QoS, CoS and DSCP for 8 Priority Queues
- IEEE 802.3ad Link Aggregation and Static Trunk
- STP, RSTP and Loop Detection
- DHCP Snooping, DHCP Option 82 and DHCP Auto Provisioning
- WEB, CLI, Telnet, SSHv2 and SNMP v1/v2c/v3 Management Interface



High Density



FOS-5152



Front Access Design



FOS-5128

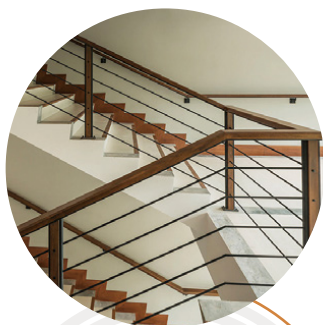


8.5-inch Half Size



FOS-5112

Small-sized, Easily Deployed and Easily Expandable Fiber Solutions



10G/2.5G Solution



HES-5105SFP+



Cable Management

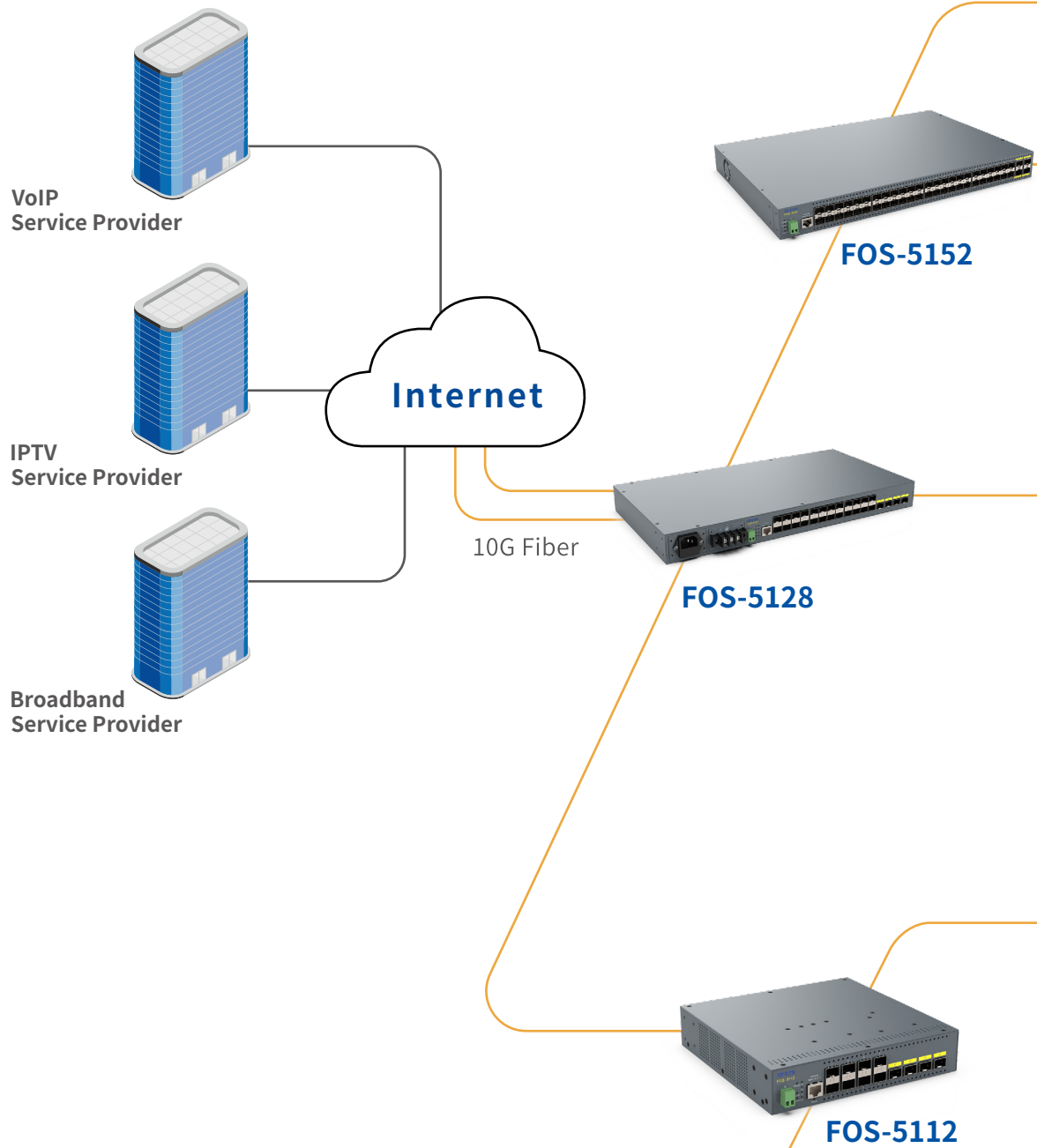





HES-3106-SE

As a leading provider of network equipment for FTTH, CTS CPE switch - HES series is designed to be installed in wall enclosures or on an individual wall-mount kit at any location. The add-on cable tray can organize excessive cable and provide extra protection to the delicate fiber. The HES series is equipped with 4/5-port 10/100/1000Base-T copper and 1 extra 100/1000Base-X SFP or 1/10GBase-X SFP+ fiber interface that can flexibly work with suitable SFP transceivers to connect to a backbone switch within up to 120km. HES series also supports powerful Layer 2 protocol functions, robust security features and management interfaces as follows.

- IEEE 802.1q Tagged VLAN, Q-in-Q, Port-based VLAN and VLAN
- IGMP Snooping v1, v2 and v3; MLD Snooping v1 and v2
- IEEE 802.1p QoS, CoS and DSCP for 8 Priority Queues
- Loop Detection, Storm Control and Bandwidth Control
- DHCP Snooping, DHCP Client and DHCP Auto Provisioning
- WEB, CLI, Telnet, SSHv2 and SNMP v1/v2c/v3 Management Interface

Application of Fiber Switch Solutions



	10G Fiber
	1G Fiber
	RJ-45

Enterprise

ESW-5128

EPS-5112

- IP Cam
- VoIP
- PC
- Wi-Fi AP
- Laptop

Campus

FOS-5152

FOS-3114

EPS-3128

- IP Cam
- VoIP
- PC
- Wi-Fi AP
- Laptop

Home

HES-5105SFP+

- Internet
- VoIP
- IPTV

Home

HES-3106-SE

- Internet
- VoIP
- IPTV

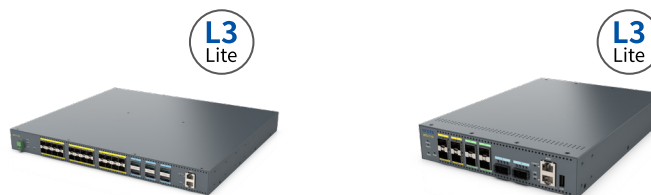
19/8.5-inch 100G Fiber Managed Access Switch

Model Name

XFS-7130-6HG

XFS-7110-2HG

Product Image



Hardware	100G QSFP28	6 (4 x 25G Breakout)	2 (4 x 25G Breakout)
	25G SFP28	-	4
	10G SFP+	24 (1G Compatible)	4 (1G Compatible)
	1000Base-X	-	-
	Management Port (RJ-45)	1	1
	RS-232 Console Port (RJ-45)	1	1
	USB Port	1 x USB 2.0 (Type A)	1 x USB 2.0 (Type A)
	DI (Digital Input)	1	-
	MAC Address Table	32K	
	Non-blocking Switching Fabric	1680Gbps	680Gbps
	Memory Buffer	6 MB	
	Jumbo Frame	10 KB	
	Dimension W x D x H	440 x 390 x 44mm	210 x 290 x 44mm
	Operating Temperature (Humidity)	0~50° C (5~90%)	
	Power Source	100~240VAC/48VDC	100~240VAC/12VDC/48VDC
	Power Redundancy	●	●
Power Consumption (Full Load)	90W	62W	
Layer 3 Feature	IP Interface	SVI, Inter-VLAN Routing, IPv4/IPv6 Dual Stack	
	IP Routing	Static Routing (IPv4/IPv6)	
	IP Services	DHCP Relay, IPv4 ARP, IPv6 ND	
Traffic Management	IPv6	IPv4/IPv6 Dual Stack	
	QoS	802.1p, CoS/DSCP	
	QoS Priority Queue	8	
	Bandwidth Control	●	
	Storm Control	●	
	IPTV Multicast	IGMP Snooping v1/v2/v3, MLD Snooping v1/v2	
	Network Redundancy	STP/RSTP/MSTP, ERPS*	
	LACP	●	
	VLAN	802.1q, Q-in-Q, Port Based, VLAN-ID Based, Selective QinQ, VLAN Translation	
	VLAN ID	4094	
VLAN Group	4K		
Security & Authentication	SSH v2	●	
	DHCP Option 82	●	
	Authentication	RADIUS, TACACS+, 802.1x MAB	
	ACL (Access Control List)	●	
Network Management & Maintenance	Management	Telnet, SSH v2, WEB, SNMP v1/v2c/v3, Zabbix Monitoring Template	
	Port Mirroring	●	
	IEEE 802.3ah OAM	●*	
	IEEE 802.1ag CFM	●*	
	SNMP Power Down Trap	●	
	DHCP	Client, Auto Provisioning, Snooping	
	Time Synchronization	IEEE 1588v2 PTP (Transparent Clock), SNTP	
Firmware/Configuration Upgrade	FTP/TFTP/HTTP/HTTPS/USB 2.0		
Certifications	EMC/Safety	CE/FCC Class A, RoHS	

* Coming soon

8.5-inch All 10G Fiber Managed Access Switch

Model Name

XFS-5112

Product Image



Hardware	10G SFP+	12 (1G Compatible)
	1000Base-X	-
	RS-232 Console Port (RJ-45)	1
	DI (Digital Input)	1
	MAC Address Table	32K
	Non-blocking Switching Fabric	240Gbps
	Memory Buffer	2 MB
	Jumbo Frame	12 KB
	Dimension W x D x H	210 x 230 x 44mm
	Operating Temperature (Humidity)	0~50° C (5~90%)
	Power Source	100~240VAC/12VDC/48VDC
	Power Redundancy	●
	Power Consumption (Full Load)	28.8W
	Layer 3 Feature	IP Interface
IP Routing		Static Routing (IPv4/IPv6)
IP Services		DHCP Relay, IPv4 ARP, IPv6 ND
Traffic Management	IPv6	IPv4/IPv6 Dual Stack
	QoS	802.1p, CoS/DSCP
	QoS Priority Queue	8
	Bandwidth Control	●
	Storm Control	●
	IPTV Multicast	IGMP Snooping v1/v2/v3, MLD Snooping v1/v2
	Network Redundancy	STP/RSTP/MSTP, ERPS*
	LACP	●
	VLAN	802.1q, Q-in-Q, Port Based, VLAN-ID Based, Selective QinQ, VLAN Translation
	VLAN ID	4094
VLAN Group	4K	
Security & Authentication	SSH v2	●
	DHCP Option 82	●
	Authentication	RADIUS, TACACS+, 802.1x MAB
	ACL (Access Control List)	●
Network Management & Maintenance	Management	Telnet, SSH v2, WEB, SNMP v1/v2c/v3, Zabbix Monitoring Template
	Port Mirroring	●
	IEEE 802.3ah OAM	● *
	IEEE 802.1ag CFM	-
	SNMP Power Down Trap	●
	DHCP	Client, Auto Provisioning, Snooping
	SNTP	●
Firmware/Configuration Upgrade	FTP/TFTP/HTTP/HTTPS	
Certifications	EMC/Safety	CE/FCC Class A, UKCA, RCM, VCCI, RoHS

* Coming soon

19/8.5-inch 10G Fiber Managed Access Switch

Model Name	FOS-5152	FOS-5128	FOS-5112
Product Image			

	FOS-5152	FOS-5128	FOS-5112	
Hardware	10G SFP+	4 (1G Compatible)	4 (1G Compatible)	4 (1G Compatible)
	10/100/1000Base-T	-	-	-
	1000Base-X	48	24	8
	RS-232 Console Port (RJ-45)	1	1	1
	DI (Digital Input)	1	1	1
	MAC Address Table	32K	16K	16K
	Non-blocking Switching Fabric	176Gbps	128Gbps	96Gbps
	Memory Buffer	2 MB	1.5 MB	1.5 MB
	Jumbo Frame		12 KB	
	Dimension W x D x H	440 x 290 x 44mm	440 x 230 x 44mm	210 x 205 x 44mm
	Operating Temperature (Humidity)	0~50° C (5~90%)		
	Power Source	100~240VAC/48VDC		
	Power Redundancy	●	●	-
	Power Consumption (Full Load)	85W	40W	17.8W
Layer 3 Feature*	IP Interface	SVI, Inter-VLAN Routing, IPv4/IPv6 Dual Stack		
	IP Routing	Static Routing (IPv4/IPv6)		
	IP Services	DHCP Relay, IPv4 ARP, IPv6 ND		
Traffic Management	IPv6	IPv4/IPv6 Dual Stack		
	QoS	802.1p, CoS/DSCP		
	QoS Priority Queue	8		
	Bandwidth Control	●		
	Storm Control	●		
	IPTV Multicast	IGMP Snooping v1/v2/v3, MLD Snooping v1/v2		
	Network Redundancy	CTS Fast Ring v2**, STP/RSTP		
	LACP	●		
	VLAN	802.1q, Q-in-Q, Port Based, VLAN-ID Based, Selective QinQ, VLAN Translation		
	VLAN ID	4094		
VLAN Group	4K			
Security & Authentication	SSH v2	●		
	DHCP Option 82	●		
	Authentication	RADIUS, TACACS+, 802.1x MAB		
	ACL (Access Control List)	●		
Network Management & Maintenance	Management	Telnet, SSH v2, WEB, SNMP v1/v2c/v3, Zabbix Monitoring Template		
	Port Mirroring	●		
	IEEE 802.3ah OAM	●		
	SNMP Power Down Trap	●		
	DHCP	Client, Auto Provisioning, Snooping		
	SNTP	●		
	Firmware/Configuration Upgrade	FTP/TFTP/HTTP/HTTPS		
Certifications	EMC/Safety			
	CE/FCC Class A, UKCA, RCM, RoHS			

* Coming soon

** CTS Fast Ring v2 includes Ring and Chain Protocol

19/8.5-inch 1G Fiber Managed Access Switch

Model Name	FOS-3128	FOS-3114	FOS-3110
------------	----------	----------	----------

Product Image



Hardware	10G SFP+	-	-	-
	10/100/1000Base-T	4 (COMBO)	-	2 (COMBO)
	1000Base-X	28	14	10
	RS-232 Console Port (RJ-45)	1	1	1
	DI (Digital Input)	-	1	1
	MAC Address Table	16K	8K	
	Non-blocking Switching Fabric	56Gbps	28Gbps	20Gbps
	Memory Buffer	1.5 MB	524.8 KB	
	Jumbo Frame	9 KB		
	Dimension W x D x H	440 x 205 x 44mm	210 x 205 x 44mm	
	Operating Temperature (Humidity)	0~50° C (5~90%)		
	Power Source	100~240VAC/48VDC	100~240VAC	
	Power Redundancy	●	-	
	Power Consumption (Full Load)	30W	12W	12W
Traffic Management	IPv6	IPv4/IPv6 Dual Stack		
	QoS	802.1p, CoS/DSCP		
	QoS Priority Queue	8		
	Bandwidth Control	●		
	Storm Control	●		
	IPTV Multicast	IGMP Snooping v1/v2/v3, MLD Snooping v1/v2		
	Network Redundancy	CTS Fast Ring v2*, STP/RSTP		
	LACP	●		
	VLAN	802.1q, Q-in-Q, Port Based		
	VLAN ID	4094		
Security & Authentication	VLAN Group	2K		
	SSH v2	●		
	DHCP Option 82	●		
	Authentication	RADIUS, TACACS+	RADIUS, TACACS+, 802.1x MAB	
Network Management & Maintenance	ACL (Access Control List)	●		
	Management	Telnet, SSH v2, WEB, SNMP v1/v2c/v3, Zabbix Monitoring Template		
	Port Mirroring	●		
	IEEE 802.3ah OAM	-		
	SNMP Power Down Trap	●		
	DHCP	Client, Auto Provisioning, Snooping		
	SNTP	●		
Certifications	Firmware/Configuration Upgrade	FTP/TFTP/HTTP/HTTPS		
	EMC/Safety	CE/FCC Class A, RCM, RoHS		

* CTS Fast Ring v2 includes Ring and Chain Protocol

19/8.5-inch 10G Ethernet Managed Access Switch

Model Name	ESW-5128	ESW-5112-2MG
------------	----------	--------------



Hardware	10G SFP+	4 (1G Compatible)	2 (1G Compatible)
	1G/2.5G/5G/10GBase-T	-	2 (100M Compatible)
	10/100/1000Base-T	24	8
	1000Base-X	-	-
	RS-232 Console Port (RJ-45)	1	1
	DI (Digital Input)	1	1
	MAC Address Table	16K	
	Non-blocking Switching Fabric	128Gbps	96Gbps
	Memory Buffer	1.5 MB	
	Jumbo Frame	12 KB	
	Dimension W x D x H	440 x 205 x 44mm	210 x 205 x 44mm
	Operating Temperature (Humidity)	0~50° C (5~90%)	
	Power Source	100~240VAC/48VDC	100~240VAC/12VDC/48VDC
	Power Redundancy	●	
Power Consumption (Full Load)	24W	19.7W	
Layer 3 Feature*	IP Interface	SVI, Inter-VLAN Routing, IPv4/IPv6 Dual Stack	
	IP Routing	Static Routing (IPv4/IPv6)	
	IP Services	DHCP Relay, IPv4 ARP, IPv6 ND	
Traffic Management	IPv6	IPv4/IPv6 Dual Stack	
	QoS	802.1p, CoS/DSCP	
	QoS Priority Queue	8	
	Bandwidth Control	●	
	Storm Control	●	
	IPTV Multicast	IGMP Snooping v1/v2/v3, MLD Snooping v1/v2	
	Network Redundancy	CTS Fast Ring v2**, STP/RSTP	
	LACP	●	
	VLAN	802.1q, Q-in-Q, Port Based, Selective QinQ, VLAN Translation	
	VLAN ID	4094	
VLAN Group	4K		
Security & Authentication	SSH v2	●	
	DHCP Option 82	●	
	Authentication	RADIUS, TACACS+, 802.1x MAB	
	ACL (Access Control List)	●	
Network Management & Maintenance	Management	Telnet, SSH v2, WEB, SNMP v1/v2c/v3, Zabbix Monitoring Template	
	Port Mirroring	●	
	IEEE 802.3ah OAM	●	
	SNMP Power Down Trap	●	
	DHCP	Client, Auto Provisioning, Snooping	
	SNTP	●	
	Firmware/Configuration Upgrade	FTP/TFTP/HTTP/HTTPS	
Certifications	EMC/Safety		CE/FCC Class A, UKCA, RCM, VCCI, RoHS

* Coming soon

** CTS Fast Ring v2 includes Ring and Chain Protocol

19/10-inch 1G Ethernet Managed Access Switch

Model Name	ESW-3128	SWH-3112
------------	----------	----------

Product Image



Hardware	10G SFP+	-	-
	1G/2.5G/5G/10GBase-T	-	-
	10/100/1000Base-T	28	12
	1000Base-X	4 (COMBO)	4 (COMBO)
	RS-232 Console Port (RJ-45)	1	1
	DI (Digital Input)	-	-
	MAC Address Table	16K	8K
	Non-blocking Switching Fabric	56Gbps	24Gbps
	Memory Buffer	1.5 MB	512 KB
	Jumbo Frame	9 KB	
	Dimension W x D x H	440 x 205 x 44mm	265 x 183 x 44mm
	Operating Temperature (Humidity)	0~50° C (5~90%)	
	Power Source	100~240VAC/48VDC	100~240VAC
	Power Redundancy	●	-
	Power Consumption (Full Load)	30W	12W
Traffic Management	IPv6	IPv4/IPv6 Dual Stack	
	QoS	802.1p, CoS/DSCP	
	QoS Priority Queue	8	
	Bandwidth Control	●	
	Storm Control	●	
	IPTV Multicast	IGMP Snooping v1/v2/v3, MLD Snooping v1/v2	
	Network Redundancy	CTS Fast Ring v2**, STP/RSTP	
	LACP	●	
	VLAN	802.1q, Q-in-Q, Port Based	
	VLAN ID	4094	
Security & Authentication	VLAN Group	2K	
	SSH v2	●	
	DHCP Option 82	●	
	Authentication	RADIUS, TACACS+, 802.1x MAB*	
Network Management & Maintenance	ACL (Access Control List)	●	
	Management	Telnet, SSH v2, WEB, SNMP v1/v2c/v3, Zabbix Monitoring Template	
	Port Mirroring	●	
	IEEE 802.3ah OAM	-	
	SNMP Power Down Trap	●	-
	DHCP	Client, Auto Provisioning, Snooping	
	SNTP	●	
Certifications	Firmware/Configuration Upgrade	FTP/TFTP/HTTP/HTTPS	
	EMC/Safety	CE/FCC Class A, RoHS	

* Coming soon

** CTS Fast Ring v2 includes Ring and Chain Protocol

19/8.5-inch PoE Managed Switch

Model Name	EPS-5112-8BT	EPS-3128-240W/480W EPS-3128-240W/480W-LP
------------	--------------	---



Hardware	10G SFP+	2 (1G Compatible)	-	
	1G/2.5G/5G/10GBase-T	2 (100M Compatible)	-	
	10/100/1000Base-T	8	28	
	1000Base-X	-	4 (COMBO)	
	RS-232 Console Port (RJ-45)	1	1	
	DI (Digital Input)	1	-	
	PoE	8 x IEEE 802.3af/at/bt	24 x IEEE 802.3af/at	
	PoE Budget (Max.)	200W	240W/480W	
	MAC Address Table	16K		
	Non-blocking Switching Fabric	96Gbps	56Gbps	
	Memory Buffer	1.5 MB		
	Jumbo Frame	12 KB	9 KB	
	Dimension W x D x H	210 x 290 x 44mm	440 x 330 x 44mm	
	Operating Temperature (Humidity)	0~50° C (5~90%)		
	Power Source	100~240VAC		
	Power Redundancy	-	Internal Redundancy**	
Power Consumption (Full Load)	241W	260W/500W		
Layer 3 Feature*	IP Interface	SVI, Inter-VLAN Routing, IPv4/IPv6 Dual Stack	-	
	IP Routing	Static Routing (IPv4/IPv6)	-	
	IP Services	DHCP Relay, IPv4 ARP, IPv6 ND	-	
Traffic Management	IPv6	IPv4/IPv6 Dual Stack		
	QoS	802.1p, CoS/DSCP		
	QoS Priority Queue	8		
	Bandwidth Control	●		
	Storm Control	●		
	IPTV Multicast	IGMP Snooping v1/v2/v3, MLD Snooping v1/v2		
	Network Redundancy	CTS Fast Ring v2***, STP/RSTP		
	LACP	●		
	VLAN	802.1q, Q-in-Q, Port Based, Selective QinQ, VLAN Translation	802.1q, Q-in-Q, Port Based	
	VLAN ID	4094		
Security & Authentication	SSH v2	●		
	DHCP Option 82	●		
	Authentication	RADIUS, TACACS+, 802.1x MAB	RADIUS, TACACS+, 802.1x MAB*	
	ACL (Access Control List)	●		
Network Management & Maintenance	Management	Telnet, SSH v2, WEB, SNMP v1/v2c/v3, Zabbix Monitoring Template		
	Port Mirroring	●		
	IEEE 802.3ah OAM	●	-	
	SNMP Power Down Trap	-		
	DHCP	Client, Auto Provisioning, Snooping		
	SNTP	●		
Firmware/Configuration Upgrade	FTP/TFTP/HTTP/HTTPS			
Certifications	EMC/Safety	CE/FCC Class A, UKCA, RCM, VCCI, RoHS	CE/FCC Class A, RoHS	

* Coming soon

** Function available only when the total power consumption is under 240W for EPS-3128-480W(-LP) model

*** CTS Fast Ring v2 includes Ring and Chain Protocol

Fiber Managed CPE Switch

Model Name	HES-5106SFP+	HES-5105SFP-RF	HES-5105SFP+	HES-3106-SE
------------	--------------	----------------	--------------	-------------



Product Image



Hardware	10G SFP+	1 (1G Compatible)	1 (2.5/1G Compatible)	1 (1G Compatible)	-
	1G/2.5G/5G/10GBase-T	1	1	1	-
	10/100/1000Base-T	4	-	-	5
	100/1000/2500Base-T	-	3	3	-
	1000Base-X	-	-	-	1 (W2A/SFP)
	Optional CATV RF Receiver	-	●	-	● (RF model only)
	MAC Address Table	16K	4K	4K	4K
	Non-blocking Switching Fabric	48Gbps	55Gbps	55Gbps	12Gbps
	Memory Buffer	1.5 MB	1 MB	1 MB	192 KB
	Jumbo Frame	9 KB	16 KB	16 KB	16 KB
	Dimension W x D x H	230 x 149 x 31.1mm	230 x 149 x 31.1mm	180 x 130 x 30mm	180 x 130 x 30mm
	Operating Temperature (Humidity)	0~40° C (5~90%)	0~40° C (5~90%)	0~40° C (5~90%)	0~50° C (5~90%)
	Cable Tray	Option (HES-FCT-S)			
	Power Source	100V~240VAC to 12VDC Power Adaptor			
Power Consumption (Full Load)	14.2W	9.3W	9.1W	3.6W (W2A) 4.2W (SFP) 4.8W (W2A-RF)	
Traffic Management	IPv6	IPv4/IPv6 Dual Stack			
	QoS	802.1p, CoS/DSCP			
	QoS Priority Queue	8	8	8	4
	Bandwidth Control	●			
	Storm Control	●			
	IPTV Multicast	IGMP Snooping v1/v2/v3, MLD Snooping v1/v2			
	Network Redundancy	-			
	LACP	-			
	VLAN	802.1q, Q-in-Q, Port Based			
	VLAN ID	4094			
VLAN Group	4K	128	128	128	
Security & Authentication	SSH v2	●			
	Loop Detection	●			
	Authentication	RADIUS	RADIUS, TACACS+		
	ACL (Access Control List)	●	-		
Network Management & Maintenance	Management	Telnet, SSH v2, WEB, SNMP v1/v2c/v3, Zabbix Monitoring Template			
	Port Mirroring	●			
	IEEE 802.3ah OAM	-			
	SNMP Power Down Trap	●			
	DHCP	Client, Auto Provisioning, Snooping			
	SNTP	●			
Firmware/Configuration Upgrade	FTP/TFTP/HTTP/HTTPS				
Certifications	EMC/Safety	CE/FCC Class B, UKCA, RCM, RoHS			

MWR-3102-AX54

Dual-Band Wi-Fi 6 Mesh System



Dual Band



2.5G Ethernet



CWMP



App Support



Mesh System



WPA3



802.11ax

Product Spec



Main Chipset

- Brand: Qualcomm
- CPU: Dual Core 1.0Ghz
- Flash: eMMC 4GB
- RAM: 512MB

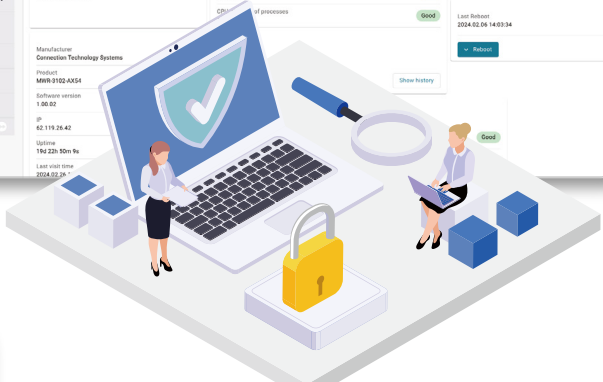
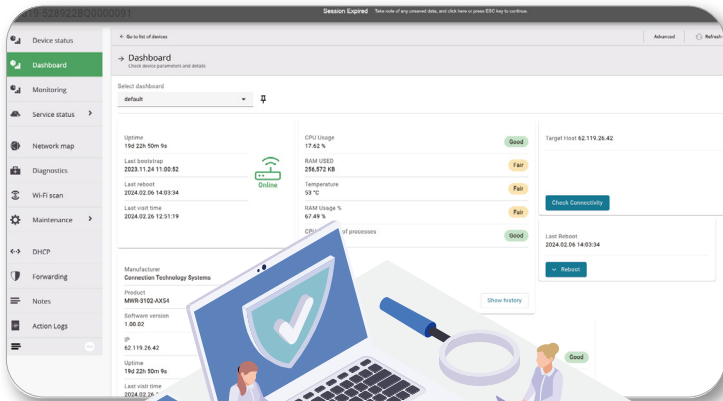
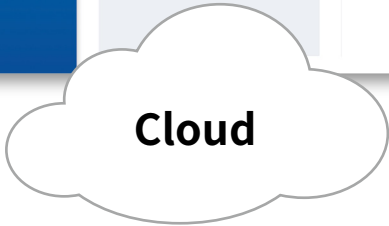
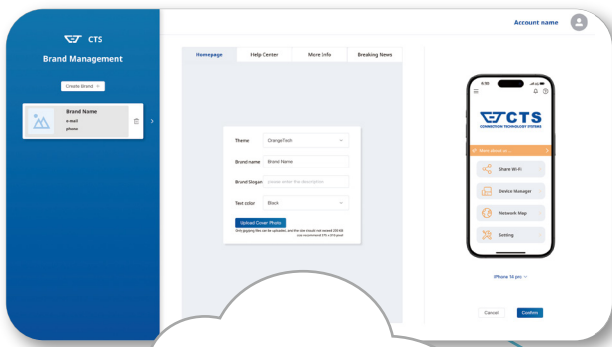
Wi-Fi Spec

- 5G: Wi-Fi 6 AX4800
 - Antenna: 4 x 4 (DL/UL MU-MIMO) 20/40/80/160Mhz
 - Channel: For EU and UK
5150~5350Mhz for CH 36-64
5470~5725Mhz for CH 100-140
- 2.4G: Wi-Fi 6 AX600
 - Antenna: 2 x2 (UL/MU-MIMO) 20/40Mhz

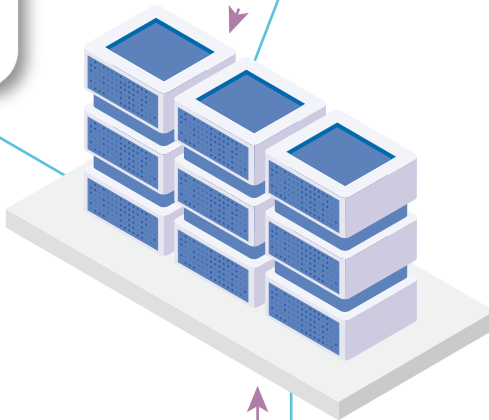
System structure

CTS CMS Platform

Interactive with front-end users APP



CWMP TR-069/181 ACS Server
Device Operation Management



Broadband
Operator
Service Network



Subscriber with CTS APP
For In-home Wi-Fi Network

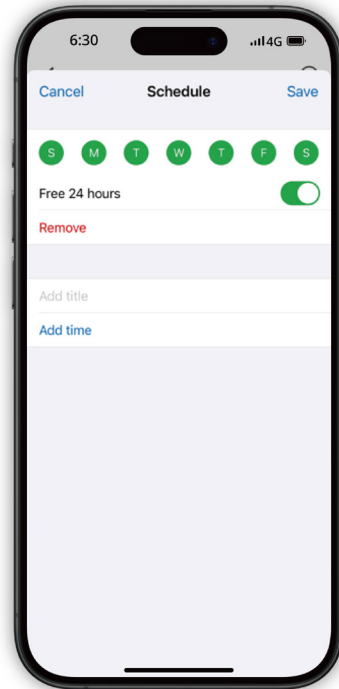
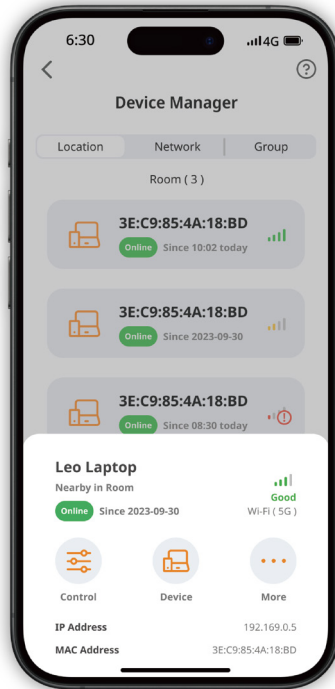
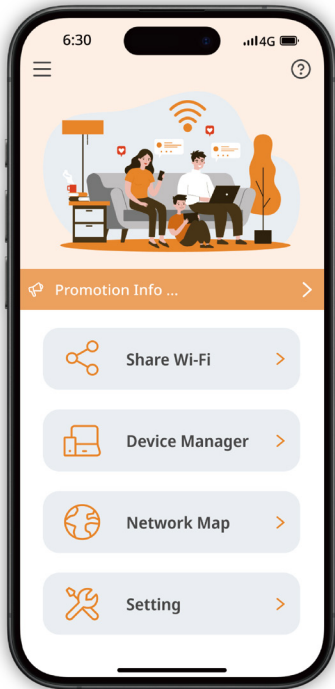


APP iConNet



iConNet empowers users to effortlessly manage and monitor their Wi-Fi environment with enhanced intuitiveness. The application provides a quick, clean, and intuitive interface for accessing and controlling the MWR-3102 Wi-Fi router, contributing to an enhanced and ultimate user experience.

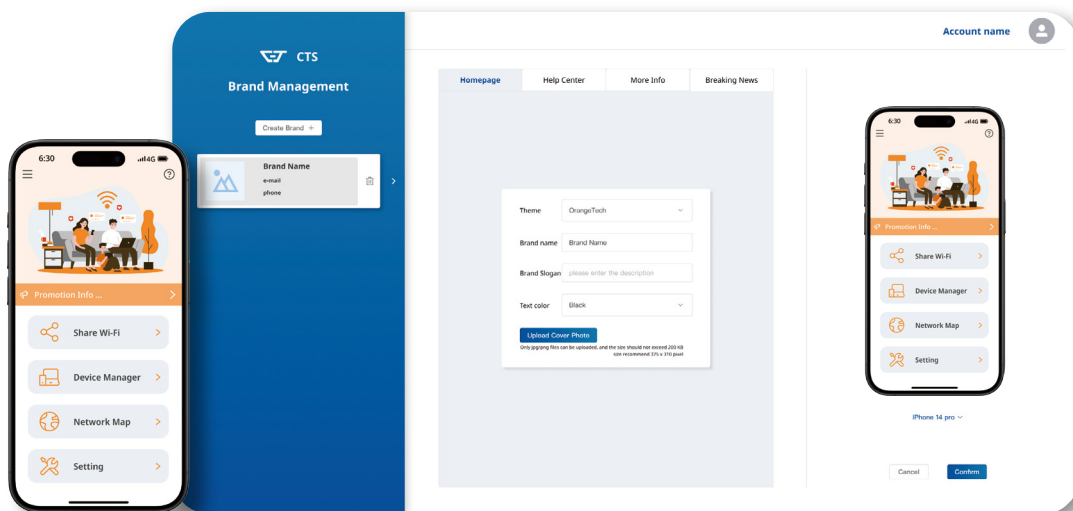
- Easily Onboarding
- Network Management
- Security - Parental control
- TroubleShooting






CSM platform

A Content Management System (CMS) is a versatile platform equipped with a myriad of features that enable service providers to establish their brand, deliver instant messages, create customized FAQs, provide customer support, and disseminate digital marketing messages, among other functionalities.

- Branding for customize APP
- Dynamic synchronize configuration and status
- Push information or notification to end user



10G Rugged Managed Switch

Model Name	SRS-5110-8BT	SRS-5110	
Product image	 		
Hardware	10G SFP+	2 (1G Compatible)	2 (1G Compatible)
	10/100/1000Base-T	8	8
	1000Base-X	-	-
	RS-232 Console Port (RJ-45)	1	1
	Digital Input/Output	1 x DO	
	PoE	8 x IEEE 802.3af/at/bt	-
	PoE Budget (Max.)	300W	-
	MAC Address Table	16K	
	Non-blocking Switching Fabric	56Gbps	
	Memory Buffer	1.5 MB	
	Jumbo Frame	12 KB	
	Dimension W x D x H	65.5 x 110 x 135mm	
	Operating Temperature (Humidity)	-20~60° C (5~90%)	
	Power Source	48~57VDC Dual Input	12~57VDC Dual Input
	Power Consumption (Full Load)	311.6W	11.61W
Traffic Management	IPv6	IPv4/IPv6 Dual Stack	
	QoS	802.1p, CoS/DSCP	
	QoS Priority Queue	8	
	Bandwidth Control	●	
	Storm Control	●	
	IPTV Multicast	IGMP Snooping v1/v2/v3, MLD Snooping v1/v2	
	Network Redundancy	CTS Fast Ring v2*, STP/RSTP	
	LACP	●	
	VLAN	802.1q, Q-in-Q, Port Based, Selective QinQ, VLAN Translation	
	VLAN ID	4094	
Security & Authentication	VLAN Group	4K	
	SSH v2	●	
	DHCP Option 82	●	
	Authentication	RADIUS, TACACS+, 802.1x MAB	
Network Management & Maintenance	ACL (Access Control List)	●	
	Management	Telnet, SSH v2, WEB, SNMP v1/v2c/v3, Zabbix Monitoring Template	
	Port Mirroring	●	
	IEEE 802.3ah OAM	-	
	SNMP Power Down Trap	-	●
	DHCP	Client, Auto Provisioning, Snooping	
Certifications	SNTF	●	
	Firmware/Configuration Upgrade	FTP/TFTP/HTTP/HTTPS	
	EMC/Safety	CE/FCC Class A, RoHS	

* CTS Fast Ring v2 includes Ring and Chain Protocol

1G Rugged Managed Switch

Model Name	SRS-3106-4BT	SRS-3106
------------	--------------	----------



Product image



Hardware	10/100/1000Base-T	4	4
	1000Base-X	2	2
	RS-232 Console Port (RJ-45)	1	1
	Digital Input/Output	1 x DI + 1 x DO	
	PoE	4 x IEEE 802.3af/at/bt	-
	PoE Budget (Max.)	300W	-
	MAC Address Table	2K	
	Non-blocking Switching Fabric	12Gbps	
	Memory Buffer	128 KB	
	Jumbo Frame	9 KB	
	Dimension W x D x H	56,5 x 110 x 135mm	
	Operating Temperature (Humidity)	-20~60° C (5~90%)	
	Power Source	48~57VDC Dual Input	12~57VDC Dual Input
	Power Consumption (Full Load)	313W	7.4W
Traffic Management	IPv6	IPv4/IPv6 Dual Stack	
	QoS	802.1p, CoS/DSCP	
	QoS Priority Queue	8	
	Bandwidth Control	●	
	Storm Control	Broadcast	
	IPTV Multicast	IGMP Snooping v1/v2/v3, MLD Snooping v1/v2	
	Network Redundancy	CTS Fast Ring v2*, STP/RSTP	
	LACP	Static Port Trunking	
	VLAN	802.1q, Q-in-Q, Port Based	
	VLAN ID	4094	
Security & Authentication	VLAN Group	128	
	SSH v2	●	
	DHCP Option 82	-	
	Authentication	RADIUS, TACACS+	
Network Management & Maintenance	ACL (Access Control List)	-	
	Management	Telnet, SSH v2, CLI, WEB, SNMP v1/v2c/v3, Zabbix Monitoring Template	
	Port Mirroring	●	
	IEEE 802.3ah OAM	-	
	SNMP Power Down Trap	-	●
	DHCP	Client, Auto Provisioning, Snooping	
	SNTP	●	
Certifications	Firmware/Configuration Upgrade	FTP/TFTP/HTTP/HTTPS	
	EMC/Safety	CE/FCC Class A, UKCA, RCM, RoHS	



* CTS Fast Ring v2 includes Ring and Chain Protocol

10G Industrial Managed Switch

Model Name	IPS-5112-8BT	IPS-5112	
Product image			
Hardware	10G SFP+ 10/100/1000Base-T 1000Base-X RS-232 Console Port (RJ-45) Digital Input/Output PoE PoE Budget (Max.) MAC Address Table Non-blocking Switching Fabric Memory Buffer Jumbo Frame Dimension W x D x H Operating Temperature (Humidity) Power Source Power Consumption (Full Load)	4 (1G Compatible) 8 - 1 1 x DO 8 x IEEE 802.3af/at/bt 300W 16K 96Gbps 1.5 MB 12 KB 87 x 110 x 135mm -40~75° C (5~90%) 48~57VDC Dual Input 315W	4 (1G Compatible) 8 - 1 1 x DO 8 x IEEE 802.3af/at 240W 16K 96Gbps 1.5 MB 12 KB 87 x 110 x 135mm -40~75° C (5~90%) 48~57VDC Dual Input 255W
Traffic Management	IPv6 QoS QoS Priority Queue Bandwidth Control Storm Control IPTV Multicast Network Redundancy LACP VLAN VLAN ID VLAN Group	IPv4/IPv6 Dual Stack 802.1p, CoS/DSCP 8 ● ● IGMP Snooping v1/v2/v3, MLD Snooping v1/v2 CTS Fast Ring v2*, STP/RSTP ● 802.1q, Q-in-Q, Port Based, Selective QinQ, VLAN Translation 4094 4K	IPv4/IPv6 Dual Stack 802.1p, CoS/DSCP 8 ● ● IGMP Snooping v1/v2/v3, MLD Snooping v1/v2 CTS Fast Ring v2*, STP/RSTP ● 802.1q, Q-in-Q, Port Based, Selective QinQ, VLAN Translation 4094 4K
Security & Authentication	SSH v2 DHCP Option 82 Authentication ACL (Access Control List)	● ● RADIUS, TACACS+, 802.1x MAB ●	● ● RADIUS, TACACS+, 802.1x MAB ●
Network Management & Maintenance	Management Port Mirroring IEEE 802.3ah OAM SNMP Power Down Trap DHCP SNTP Firmware/Configuration Upgrade	Telnet, SSH v2, WEB, SNMP v1/v2c/v3, Zabbix Monitoring Template ● - - Client, Auto Provisioning, Snooping ● FTP/TFTP/HTTP/HTTPS	Telnet, SSH v2, WEB, SNMP v1/v2c/v3, Zabbix Monitoring Template ● - - Client, Auto Provisioning, Snooping ● FTP/TFTP/HTTP/HTTPS
Certifications	EMC/Safety Stability Surge	CE/FCC Class A, RoHS IEC 60068-2-27 (Shock), IEC 60068-2-32 (Freefall), IEC 60068-2-6 (Vibration) ± 4KV	CE/FCC Class A, RoHS IEC 60068-2-27 (Shock), IEC 60068-2-32 (Freefall), IEC 60068-2-6 (Vibration) ± 4KV




* CTS Fast Ring v2 includes Ring and Chain Protocol

1G Industrial Managed Switch

Model Name	IPS-3112-SE-8BT	IPS-3112-SE	
Product Image			
Hardware	10/100/1000Base-T	8	8
	1000Base-X	4	4
	RS-232 Console Port (RJ-45)	1	1
	Digital Input/Output	1 x DO	
	PoE	8 x IEEE 802.3af/at/bt	8 x IEEE 802.3af/at
	PoE Budget (Max.)	300W	240W
	MAC Address Table	16K	
	Non-blocking Switching Fabric	24Gbps	
	Memory Buffer	1.5 MB	
	Jumbo Frame	12 KB	
	Dimension W x D x H	87 x 110 x 135mm	
	Operating Temperature (Humidity)	-40~75° C (5~90%)	
	Power Source	48~57VDC Dual Input	
	Power Consumption (Full Load)	313W	253W
	Traffic Management	IPv6	IPv4/IPv6 Dual Stack
QoS		802.1p, CoS/DSCP	
QoS Priority Queue		8	
Bandwidth Control		●	
Storm Control		●	
IPTV Multicast		IGMP Snooping v1/v2/v3, MLD Snooping v1/v2	
Network Redundancy		CTS Fast Ring v2*, STP/RSTP	
LACP		●	
VLAN		802.1q, Q-in-Q, Port Based, Selective QinQ, VLAN Translation	
VLAN ID		4094	
VLAN Group	4K		
Security & Authentication	SSH v2	●	
	DHCP Option 82	●	
	Authentication	RADIUS, TACACS+, 802.1x MAB	
	ACL (Access Control List)	●	
Network Management & Maintenance	Management	Telnet, SSH v2, WEB, SNMP v1/v2c/v3, Zabbix Monitoring Template	
	Port Mirroring	●	
	IEEE 802.3ah OAM	-	
	SNMP Power Down Trap	-	
	DHCP	Client, Auto Provisioning, Snooping	
	SNTP	●	
	Firmware/Configuration Upgrade	FTP/TFTP/HTTP/HTTPS	
Certifications	EMC/Safety	CE/FCC Class A, RoHS	
	Stability	IEC 60068-2-27 (Shock), IEC 60068-2-32 (Freefall), IEC 60068-2-6 (Vibration)	
	Surge	± 4KV	

* CTS Fast Ring v2 includes Ring and Chain Protocol

1G Industrial Managed Switch

Model Name	IPS-3110	IPS-3110-PB	IES-3110	
Product Image				
Hardware	10/100/1000Base-T	10	10	10
	1000Base-X	2 (COMBO)	2 (COMBO)	2 (COMBO)
	RS-232 Console Port (RJ-45)	1	1	1
	USB Port	1 x USB 2.0 (Type A)		
	Digital Input/Output	1 x DO		
	PoE	8 x IEEE 802.3af/at		-
	PoE Budget (Max.)	240W		-
	MAC Address Table	16K		
	Non-blocking Switching Fabric	20Gbps		
	Memory Buffer	256 KB		
	Jumbo Frame	9 KB		
	Dimension W x D x H	73 x 110 x 135mm	88 x 110 x 135mm	73 x 110 x 135mm
	Operating Temperature (Humidity)	-40~75° C (5~90%)		
	Power Source	48~54VDC Dual Input	24~54VDC Dual Input	12~54VDC Dual Input
Power Consumption (Full Load)	255W		15W	
Traffic Management	IPv6	-		
	QoS	802.1p, CoS/DSCP		
	QoS Priority Queue	8		
	Bandwidth Control	●		
	Storm Control	Broadcast		
	IPTV Multicast	IGMP Snooping v1/v2		
	Network Redundancy	CTS Fast Ring v2*, STP/RSTP		
	LACP	●		
	VLAN	802.1q, Port Based		
	VLAN ID	4094		
Security & Authentication	VLAN Group	128		
	SSH v2	●		
	DHCP Option 82	-		
	Authentication	RADIUS, 802.1x MAB		
Network Management & Maintenance	ACL (Access Control List)	-		
	Management	Telnet, SSH v2, CLI, WEB, SNMP v1/v2c/v3, Zabbix Monitoring Template		
	Port Mirroring	●		
	IEEE 802.3ah OAM	-		
	SNMP Power Down Trap	-	-	●
	DHCP	Client, Auto Provisioning, Snooping		
Certifications	SNTP	●		
	Firmware/Configuration Upgrade	FTP/TFTP/HTTP/HTTPS/USB 2.0		
	EMC/Safety	CE/FCC Class A, UKCA, RoHS		
	Stability	IEC 60068-2-27 (Shock), IEC 60068-2-32 (Freefall), IEC 60068-2-6 (Vibration)		
	Surge	± 6KV		

* CTS Fast Ring v2 includes Ring and Chain Protocol

1G Industrial Managed Switch

Model Name

IPS-3106-SE-PB

IPS-3106-SE

Product Image



Hardware	10/100/1000Base-T	4	4
	1000Base-X	2	2
	RS-232 Console Port (RJ-45)	1	1
	Digital Input/Output	1 x DI + 1 x DO	
	PoE	4 x IEEE 802.3af/at	
	PoE Budget (Max.)	120W	
	MAC Address Table	8K	
	Non-blocking Switching Fabric	12Gbps	
	Memory Buffer	524.8 KB	
	Jumbo Frame	9 KB	
	Dimension W x D x H	63 x 110 x 135mm	57 x 110 x 135mm
	Operating Temperature (Humidity)	-40~75° C (5~90%)	
	Power Source	24~54VDC Dual Input	48~54VDC Dual Input
	Power Consumption (Full Load)	135W	
Traffic Management	IPv6	IPv4/IPv6 Dual Stack	
	QoS	802.1p, CoS/DSCP	
	QoS Priority Queue	8	
	Bandwidth Control	●	
	Storm Control	●	
	IPTV Multicast	IGMP Snooping v1/v2/v3, MLD Snooping v1/v2	
	Network Redundancy	CTS Fast Ring v2*, STP/RSTP	
	LACP	●	
	VLAN	802.1q, Q-in-Q, Port Based	
	VLAN ID	4094	
Security & Authentication	VLAN Group	2K	
	SSH v2	●	
	DHCP Option 82	●	
	Authentication	RADIUS, TACACS+, 802.1x MAB	
Network Management & Maintenance	ACL (Access Control List)	●	
	Management	Telnet, SSH v2, CLI, WEB, SNMP v1/v2c/v3, Zabbix Monitoring Template	
	Port Mirroring	●	
	IEEE 802.3ah OAM	-	
	SNMP Power Down Trap	-	
	DHCP	Client, Auto Provisioning, Snooping	
Certifications	SNTP	●	
	Firmware/Configuration Upgrade	FTP/TFTP/HTTP/HTTPS	
	EMC/Safety	CE/FCC Class A, UKCA, RCM, RoHS	
	Stability	IEC 60068-2-27 (Shock), IEC 60068-2-32 (Freefall), IEC 60068-2-6 (Vibration)	
	Surge	± 6KV	

* CTS Fast Ring v2 includes Ring and Chain Protocol

10G Ethernet SFP+ Transceiver

Product Image



MODEL	SFP-51					
	Speed (Gbps)	Type	Connector	Distance	Wavelength (nm)	Temperature
SFP-51FC	10	MM	LC	300M	850	0~70° C
SFP-51FC(SM-02/10/20/40)	10	SM	LC	2/10/20/40KM	1310/1310/1310/1550	0~70° C
SFP-51W2A(SM-10/20/40)	10	WDM	LC	10/20/40KM	TX:1270/1270/1270 RX:1330/1330/1330	0~70° C
SFP-51W2B(SM-10/20/40)	10	WDM	LC	10/20/40KM	TX:1330/1330/1330 RX:1270/1270/1270	0~70° C

Gigabit Ethernet SFP Transceiver

Product Image



MODEL	SFP-31-DR					
	Speed (Mbps)	Type	Connector	Distance	Wavelength (nm)	Temperature
SFP-31FC-DR	100/1000	MM	LC	550M/2KM	1310	0~70° C
SFP-31FC(SM-10/20)-DR	100/1000	SM	LC	10/20KM	1310/1310	0~70° C
SFP-31W2A(SM-10/20)-DR	100/1000	WDM	LC	10/20KM	TX:1310/1310 RX:1550/1550	0~70° C
SFP-31W2B(SM-10/20)-DR	100/1000	WDM	LC	10/20KM	TX:1550/1550 RX:1310/1310	0~70° C

Product Image



MODEL	SFP-31					
	Speed (Mbps)	Type	Connector	Distance	Wavelength (nm)	Temperature
SFP-31FC	1000	MM	LC	550M	850	0~70° C
SFP-31FC(SM-10/20/40)	1000	SM	LC	10/20/40KM	1310/1310/1310	0~70° C
SFP-31W2A(SM-10/20/40)	1000	WDM	LC	10/20/40KM	TX:1310/1310/1310 RX:1550/1550/1550	0~70° C
SFP-31W2B(SM-10/20/40)	1000	WDM	LC	10/20/40KM	TX:1550/1550/1550 RX:1310/1310/1310	0~70° C

Copper Ethernet SFP Transceiver

Product Image



MODEL	SFP-50/30TP					
	Speed (Gbps)	Type	Connector	Distance	Wavelength (nm)	Temperature
SFP-50TP-MG(30M)	1/2.5/5/10	-	RJ-45	30M	-	0~65° C
SFP-30TP	1	-	RJ-45	100M	-	0~70° C

Industrial 10G Ethernet SFP+ Transceiver

Product Image



MODEL	SFP-51-D					
	Speed (Gbps)	Type	Connector	Distance	Wavelength (nm)	Temperature
SFP-51FC(SM-02)-D	10	SM	LC	2KM	1310	-40~85° C

Industrial Gigabit Ethernet SFP Transceiver

Product Image



MODEL	SFP-31-D					
	Speed (Mbps)	Type	Connector	Distance	Wavelength (nm)	Temperature
SFP-31FC-D	1000	MM	LC	550M	850	-40~85° C
SFP-31FC(MM-02)-D	1000	MM	LC	2KM	1310	-40~85° C
SFP-31FC(SM-10/20)-D	1000	SM	LC	10/20KM	1310/1310	-40~85° C
SFP-31W2A(SM-10/20)-D	1000	WDM	LC	10/20KM	TX:1310/1310 RX:1550/1550	-40~85° C
SFP-31W2B(SM-10/20)-D	1000	WDM	LC	10/20KM	TX:1550/1550 RX:1310/1310	-40~85° C

Lightning Protector

Product Image



MODEL	LPB-101						
	Copper Port				Temperature	Dimension W x D x H	Note
	Speed (Mbps)	Type	Input Port	Output Port			
LPB-101G-P	10/100/1000	RJ-45 w/ PoE	1	1	0~50° C	70 x 25 x 25mm	It is necessary to be grounding properly when implementing.
LPB-101G	10/100/1000	RJ-45	1	1	0~50° C	70 x 25 x 25mm	

External Battery Unit

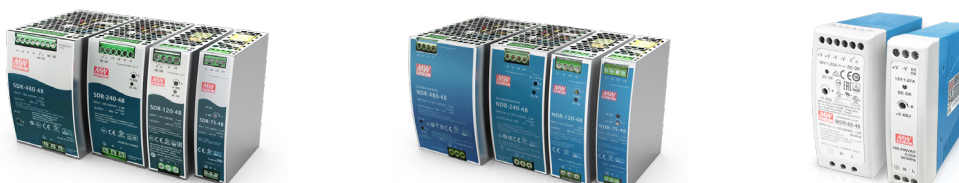
Product Image



MODEL	EBU-120						
	DC Input	External Battery (Recommended Spec.)		Charging/Backup (for reference)		Temperature	Dimension W x D x H
	Voltage	Type	Capacity	Charging Time	Backup Time		
EBU-120	12V	VRLA	12V/2.3Ah	7hrs	2.2hrs (for HES-3109SSFP)	0~50° C	124 x 70 x 30mm

Industrial Power Supply

Product Image



MODEL	Output			Input	Protection	Temperature	Dimension W x D x H
	Rated Power	Voltage Adj. Range*	Current Range	Voltage Range			
SDR-480-48	480W	48-55V	0~10A	90~264VAC 127~370VDC	Overload, Over Voltage, Over Temperature	-25~70° C	85.5 x 128.5 x 125.2mm
SDR-240-48	240W		0~5A	88~264VAC 124~370VDC			63 x 113.5 x 125.2mm
SDR-120-48	120W		0~2.5A			-30~70° C	40 x 113.5 x 125.2mm
SDR-75-48	76.8W		0~1.6A	32 x 102 x 125.2mm			
NDR-480-48	480W	48-55V	0~10A	90~264VAC 127~370VDC	Overload, Over Voltage, Over Temperature	-20~70° C	85.5 x 128.5 x 125.2mm
NDR-240-48	240W		0~5A				63 x 113.5 x 125.2mm
NDR-120-48	120W		0~2.5A			40 x 113.5 x 125.2mm	
NDR-75-48	76.8W		0~1.6A			32 x 102 x 125.2mm	
MDR-60-48	60W	48~56V	0~1.25A	85~264VAC	Overload, Over Voltage	-20~70° C	40 x 100 x 90mm
MDR-20-12	20W	10.8~13.2V	0~1.67A	120~370VDC			-20~70° C

* Output Voltage Tolerance: $\pm 1.0\%$

Connection Technology Systems Inc. (HQ)
18F-6, No.79, Sec.1, Xintai 5th Rd., Xizhi Dist., New Taipei
City 221, Taiwan, R.O.C.
Tel : +886 2 26989661
Sales Direct Line : +886 2 26989201
General Information : info@ctsystem.com

Connection Technology Systems NE AB
E A Rosengrens gata 31, 421 31 Västra Frölunda, Sweden
Tel : +46 31 22 19 80
Email : info@ctsystem.se

Connection Technology Systems CE GmbH
Wienerbergstraße 11 / Tower B / 6th Floor / Office 2
1100 Vienna, Austria
Tel : +43 1 343 9553 50
Email : cts_ce@ctsystem.com

Connection Technology Systems Japan Ltd.
Higobashi Bldg, No3 R503, 1-23-13, Edobori, Nisi-ku,
Osaka
550-0002, Japan
Tel : +81 6 6450 8890
fax : +81 6 6450 8898
Email : cts_japan@ctsystem.com

Connection Technology Systems India Private
Limited
No.1,1st Floor,RK Residency Vajarahalli,
Uttarahalli,Talgatpura, Kanakpura MN Rd, Bangalore,
Karnataka, India, 560062
Tel : +91 97403 08261
Email : cts_in@ctsystem.com

